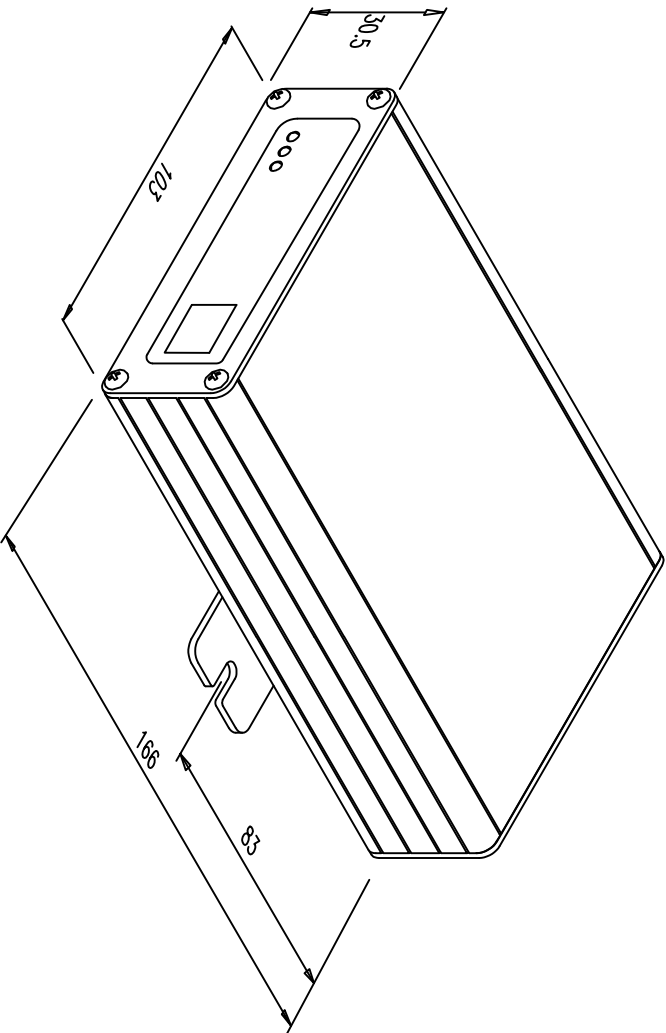
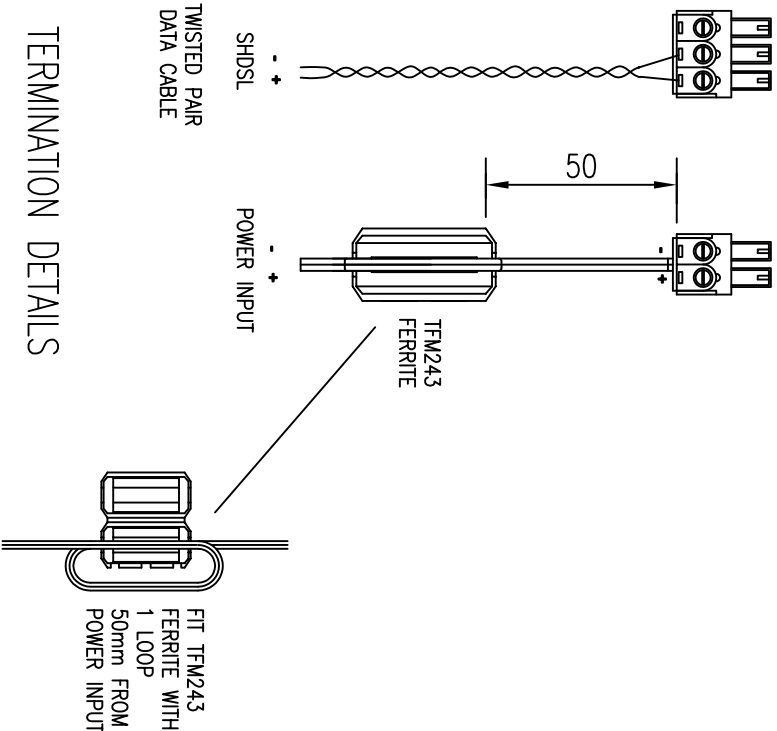
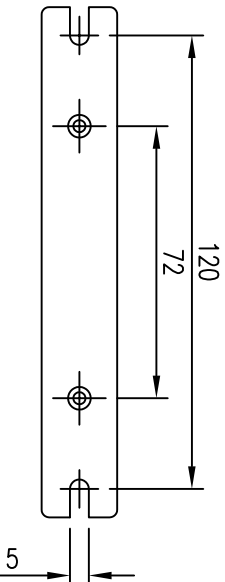


REAR PANEL



JCE-8B1 WITH MOUNTING BRACKET



MOUNTING BRACKET DETAIL

- NOTES:
1. LAN PORT IS CONNECTED TO TCP/IP NETWORK VIA CAT-5/5e/6 TYPE CABLE, 100 m MAX
  2. SHDSL PORT IS CONNECTED TO A REMOTE JACQUES LONG RANGE SLAVE INTERCOM VIA ONE PAIR TWISTED WIRE CABLE, 2000 m MAX. IF SCREENED TWISTED PAIR IS USED, CONNECT THE SCREEN TO 'S' TERMINAL.
  3. LAN PORT PLUG IS STANDARD RJ-45 ETHERNET CONNECTOR
  4. POWER PLUG CONNECTOR TYPE IS PHOENIX MC 1.5/2-ST-3.81 OR SIMILAR
  5. DATA PLUG CONNECTOR IS PHOENIX MC 1.5/3-ST-3.81 OR SIMILAR
  6. POWER INPUT IS (12 -32) V d.c. / 5.5 W
  7. POWER INPUT MUST BE FITTED WITH TFM243 CLAMP-ON FERRITE WITH ONE LOOP 50mm FROM POWER CONNECTOR. (SUPPLIED)

3RD ANGLE PROJECTION									
UNLESS OTHERWISE SPECIFIED: DIMENSIONS ARE IN MILLIMETRES					TOLERANCES				
DECIMALS					DIMS ± 0.05				
.X ± 0.4					ANGULAR ± 0.5°				
.XX ± 0.15									
FIRST USE & REVISION NOTES					DATE	INIT	JACQUES ELECTRONICS		
0. Adapted from dwg. TDE-8B1 (16/10/06): – dwg. number changed, box height changed from 53mm as well as box length changed from 226mm – rear panel connectors re-arranged					05/01/2007	CLW	JACQUES CABLE EXTENDER MODULE		
1. Position of PWR and SHDSL changed.					13/09/2007	LFB	INSTALLATION DETAILS		
2. Addition of ferrite to wiring diagram					03/03/2008	MMJ	SIZE	ADAPTED FROM	REVISION
3. Screen removed and note 2 altered.					07/07/2008	LFB	A3		3
							DATE	DRAWN: Caro Wright	SCALE
							5/01/2007	CHECKED:	1 OF 1
							DWG NO. 51161 INS-3		