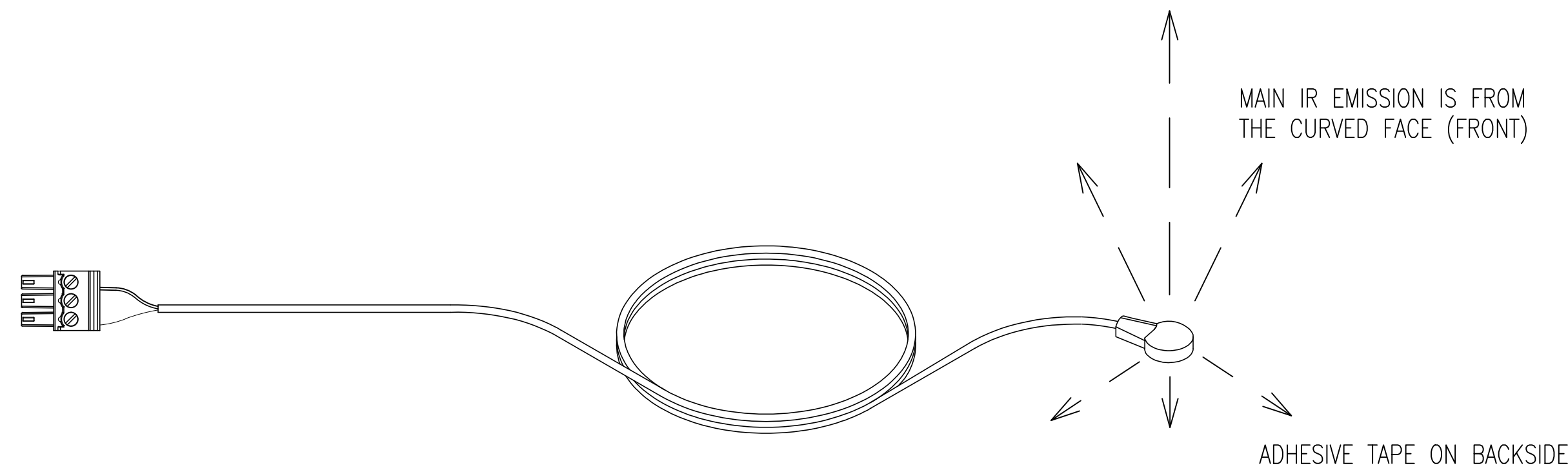
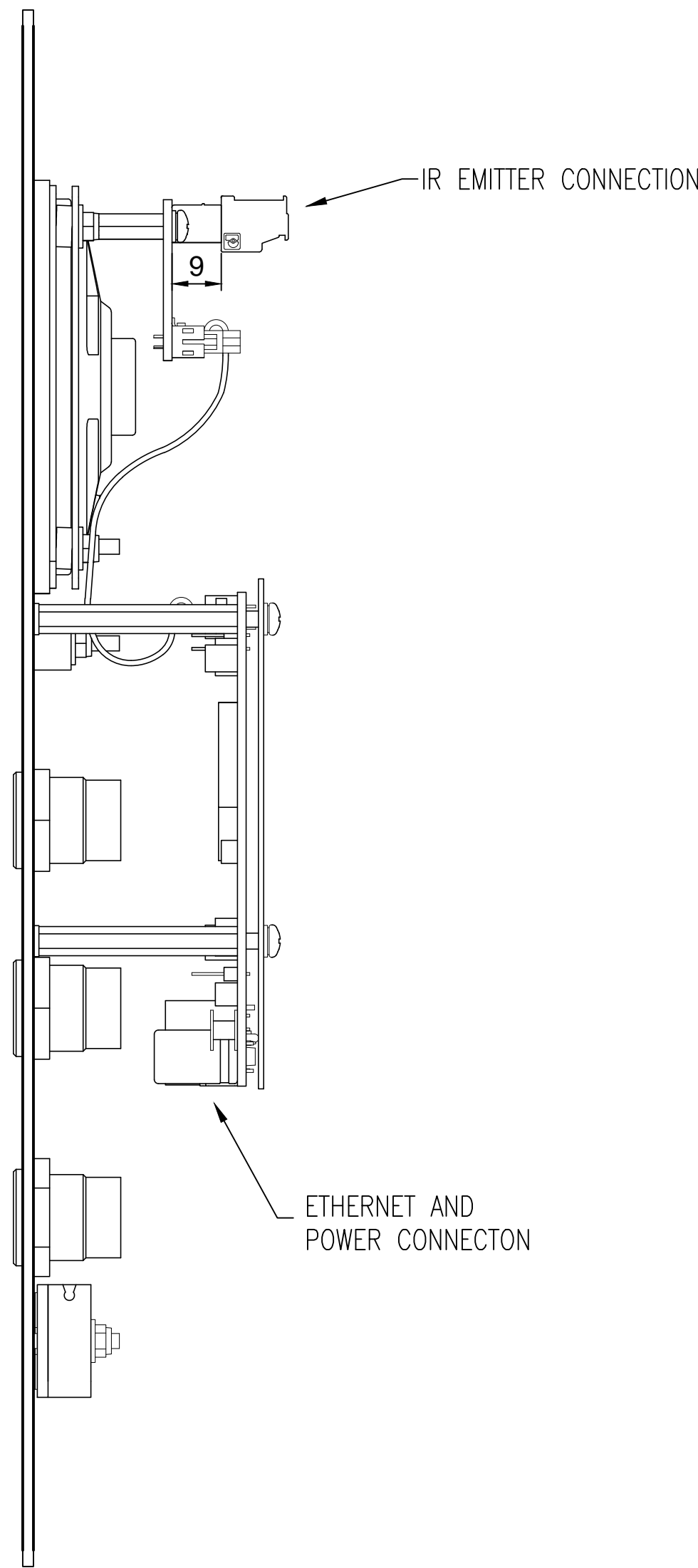
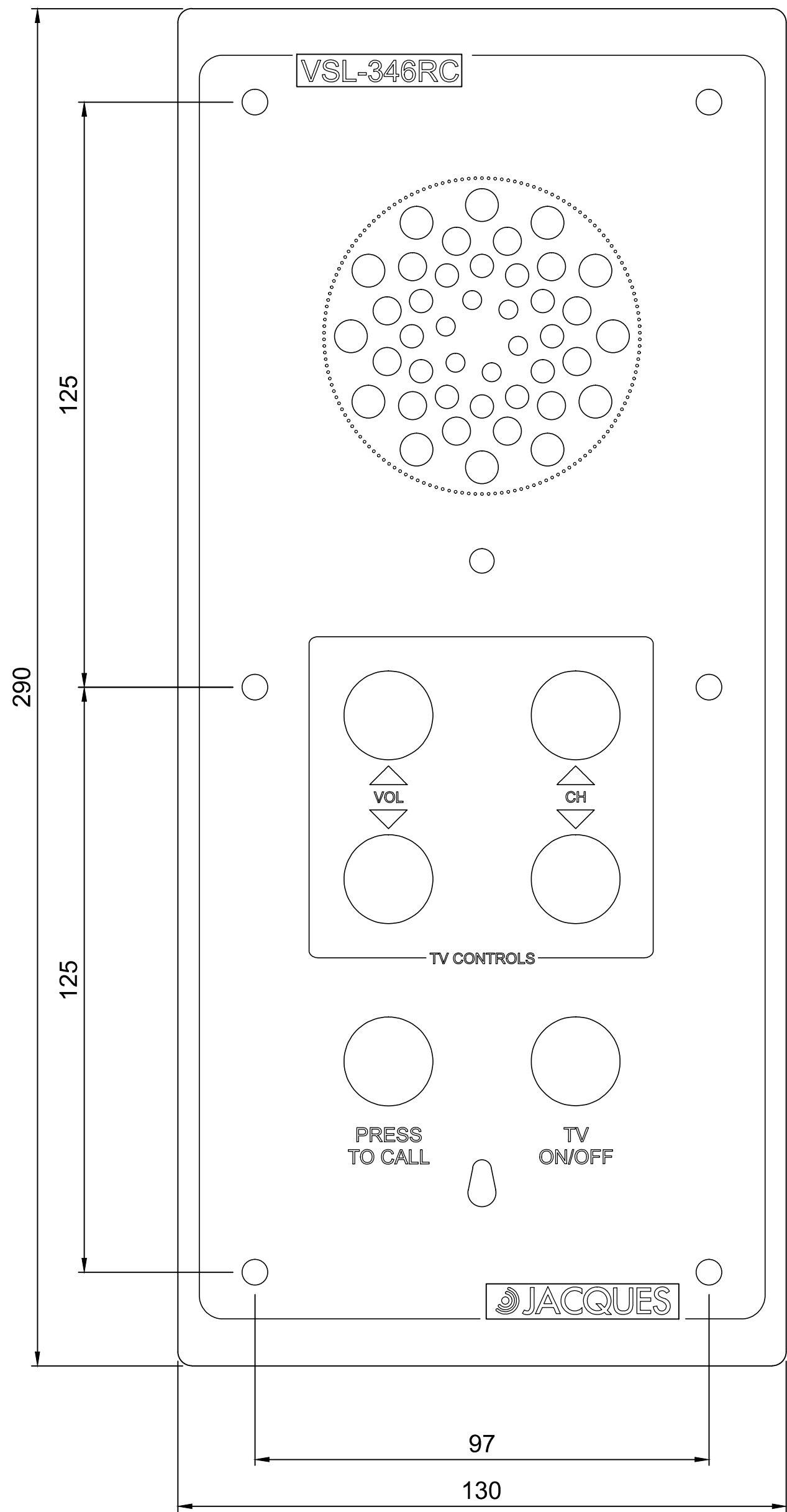
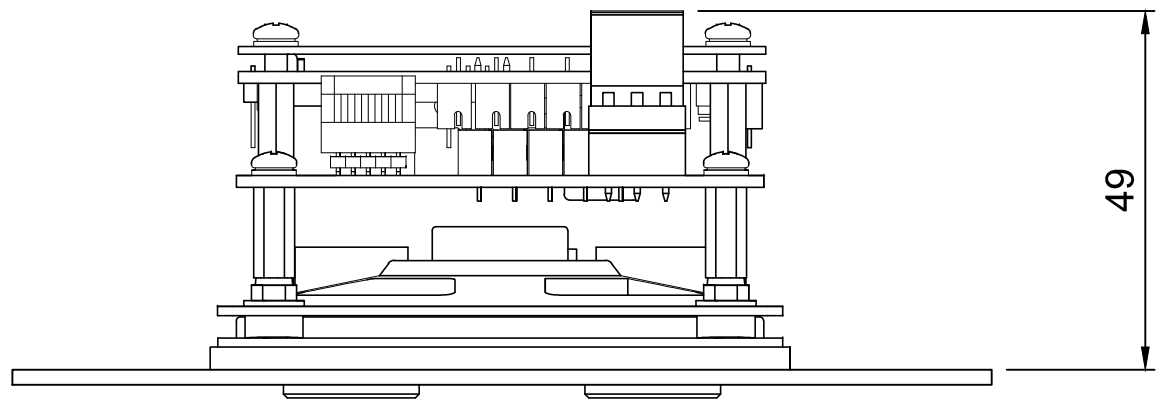


DO NOT SCALE  
IF IN DOUBT – ASK!

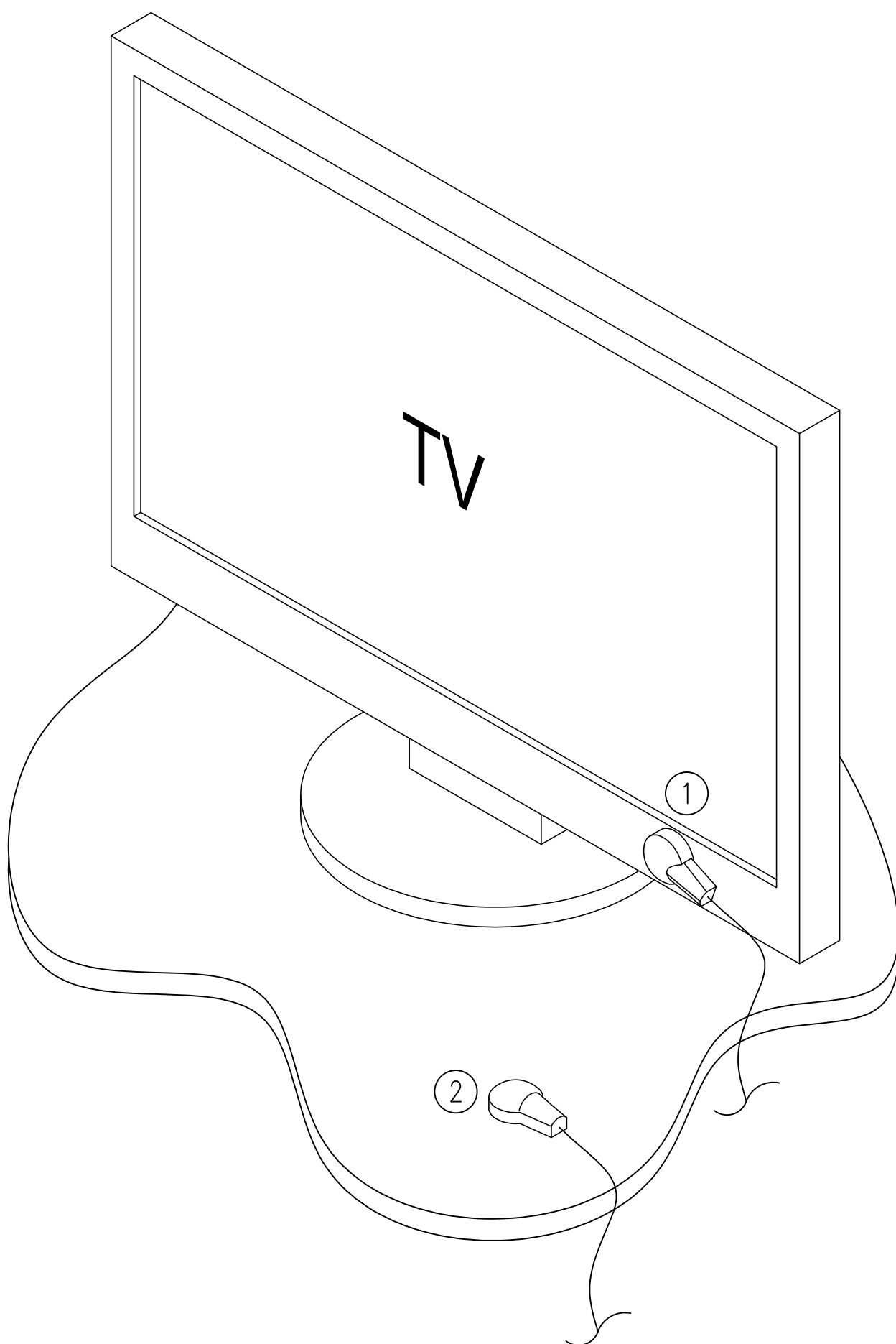
MODEL: VSL-346RC  
P/N: 51520



IR EMITTER

1. THE ADHESIVE TAPE ON THE BACK OF THE EMITTER MAY BE USED TO FIX IT OVER THE IR RECEIVER APERTURE OF THE TV. ALTHOUGH EMISSIONS FROM THE BACK OF OF THE EMITTER ARE WEAK, RECEPTION IS RELIABLE DUE TO THE CLOSE PROXIMITY. NOTE THAT THE HAND HELD REMOTE MAY STILL BE USED WITH THIS SITUATION, AS THE EMITTER IS TRANSPARENT TO IR LIGHT.

2. THE EMITTER CAN BE POSITIONED IN IN FRONT OF, TO THE SIDE OR ABOVE THE TV. THE FRONT SIDE OF THE EMITTER MUST BE AT LEAST PARTIALLY IN VIEW OF THE TV'S IR RECEIVER APERTURE. FOR MOST RELIABLE RESULTS, THE EMITTER SHOULD BE PLACED WITHIN 200 mm OF THE RECEIVER. IF THE EMITTER IS ABLE TO BE POSITIONED DIRECTLY IN FRONT OF AND FACING THE TV, SUCCESSFUL OPERATION AT UP TO 0.5 m IS POSSIBLE.

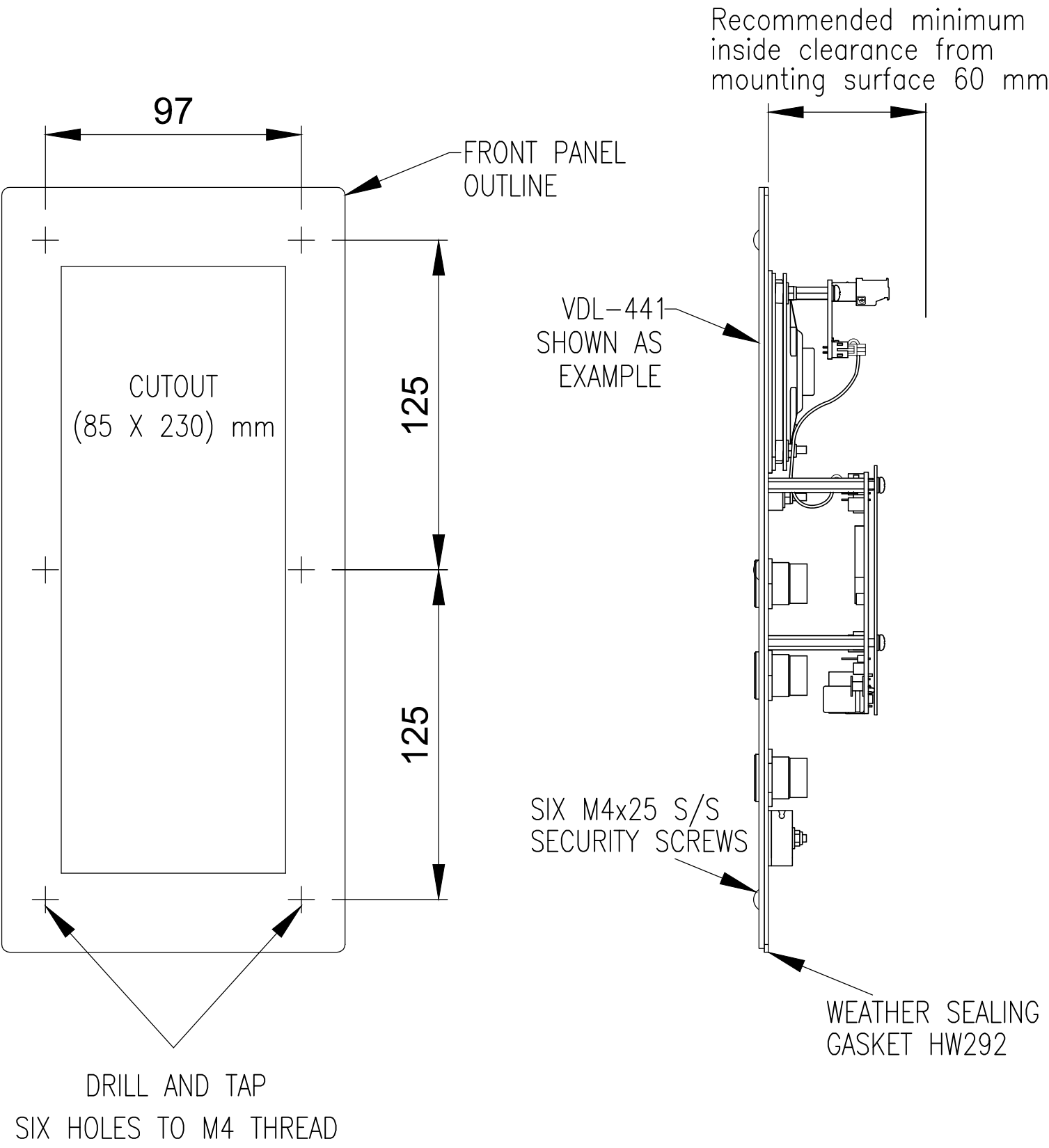


REV	DATE	CHANGE DESCRIPTION	BY
0	2011-12-20	FIRST RELEASE	LFB
1	2017-07-05	DIMENSION 145, SHT 2, CORRECTED TO 290. DRAWING FRAME UPDATED.	LFB
2	2019-11-07	J0097 CHANGED TO J5142. 3W PLUG, J5142 SHOWN FITTED TO EMITTER CABLE (FITTED AT ASSEMBLY STAGE INTERCOM).	LFB

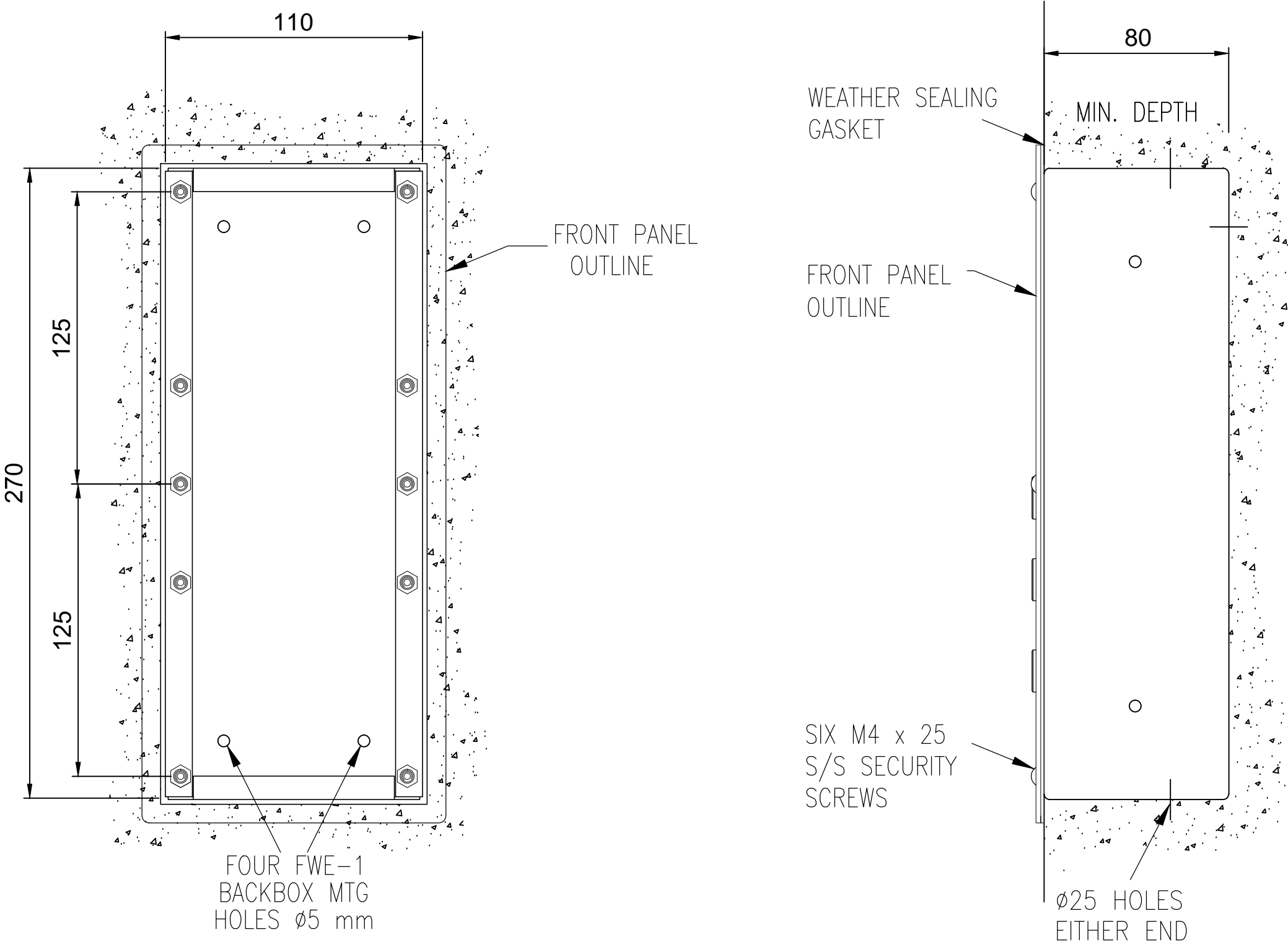
<b>JACQUES</b> Future Proof Communications		(C) Copyright Jacques Technologies Pty Ltd. All rights reserved. 28-30 Bank Street, West End Q 4101 Ph: +61 7 3846 8400 www.jacques.com.au info@jacques.com.au	
<b>VSL-346RC VoIP INTERCOM with TV INSTALLATION DETAILS</b>			
DRAWN: LFB	DATE: 2011-12-20	ADAPTED FROM:	FILENAME: 51520-INS.dwg
CHECKED:	DATE:	SCALE: N.T.S.	SHEET: 1 of 3
APPROVED:	DATE:	DWG NO: 51520-INS	REV: 2

DO NOT SCALE  
IF IN DOUBT – ASK!

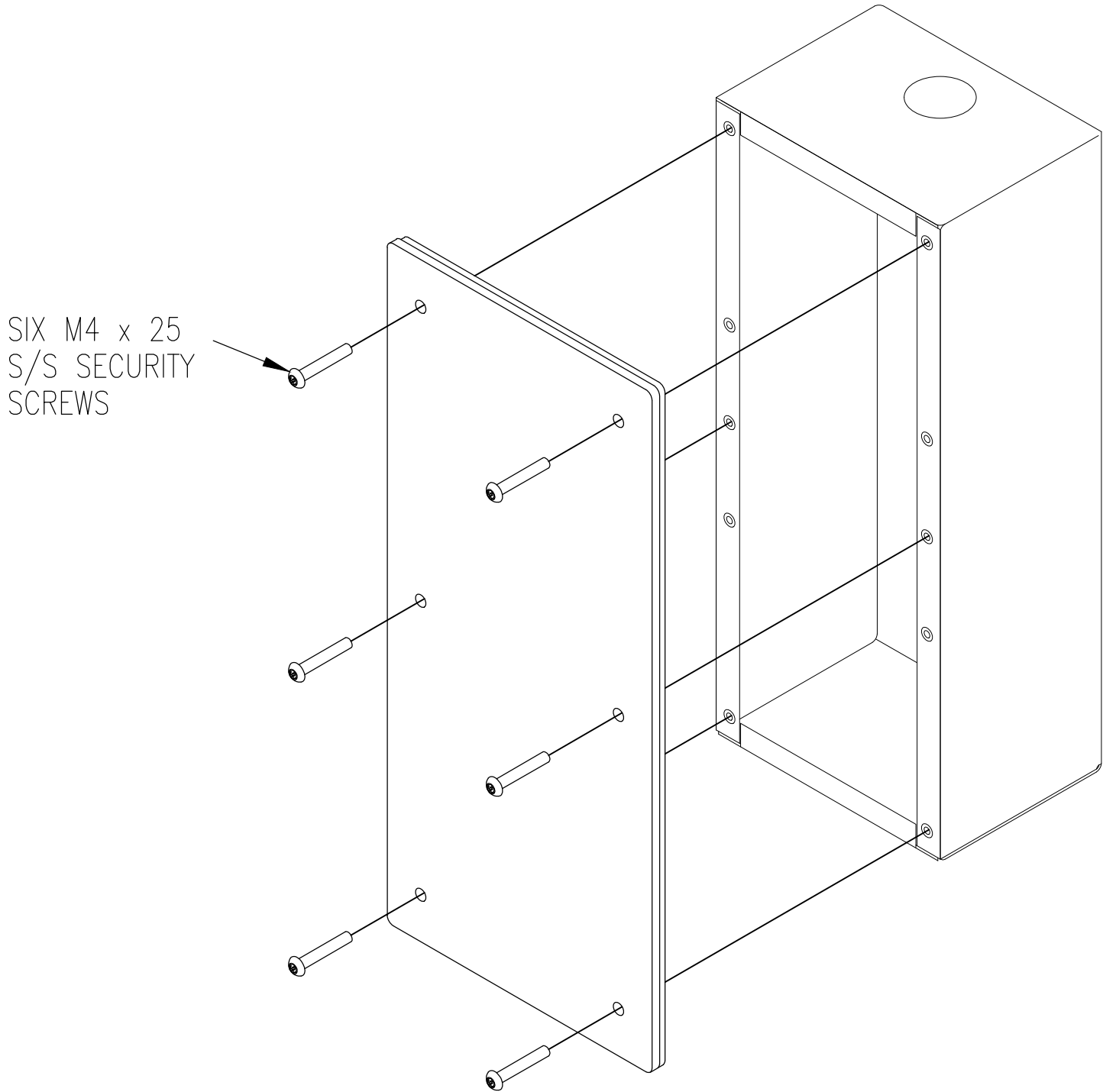
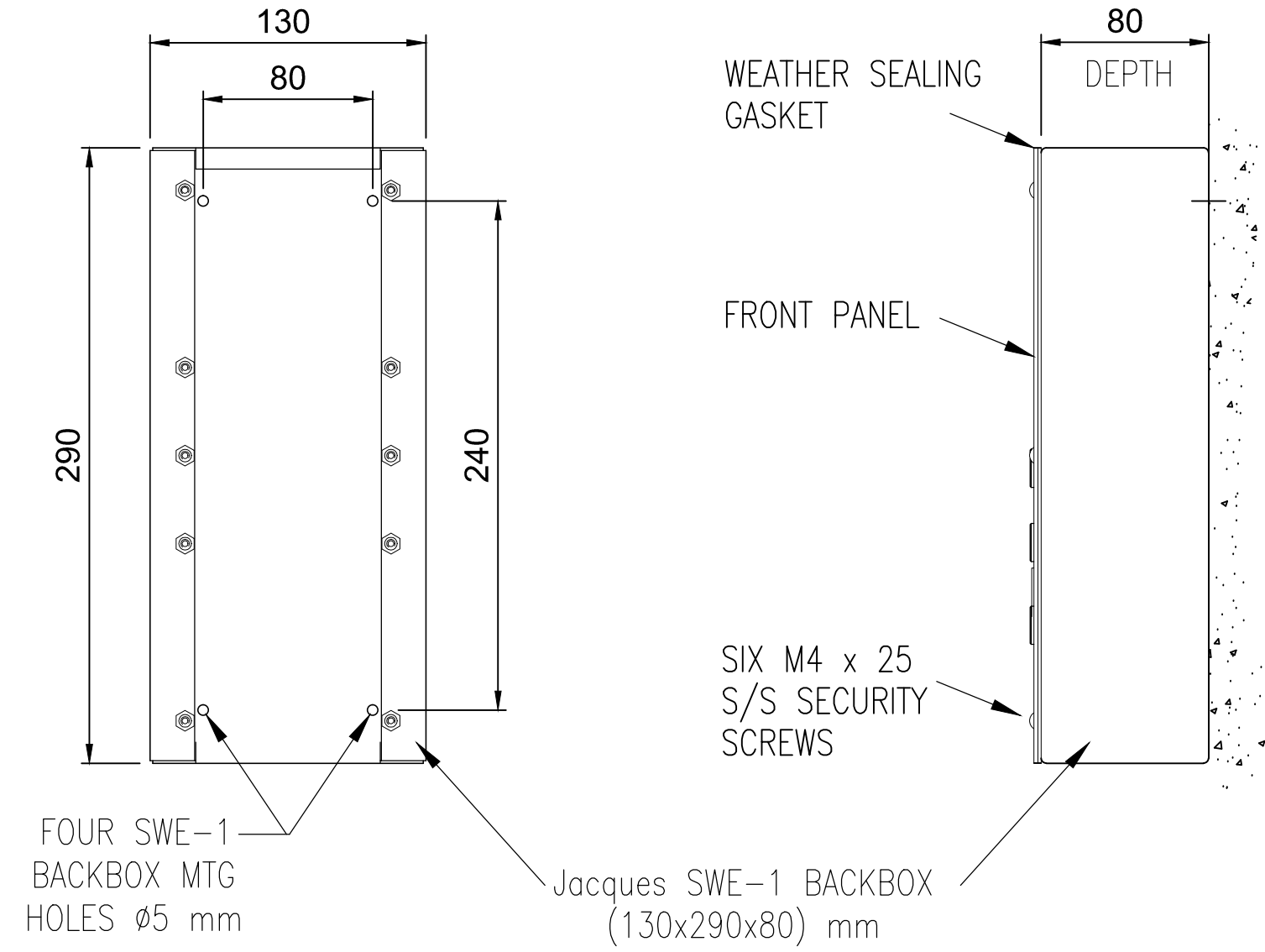
FLUSH MOUNTING INTO FLAT PANEL



FLUSH WALL MOUNTING USING **FWE-1** BACKBOX



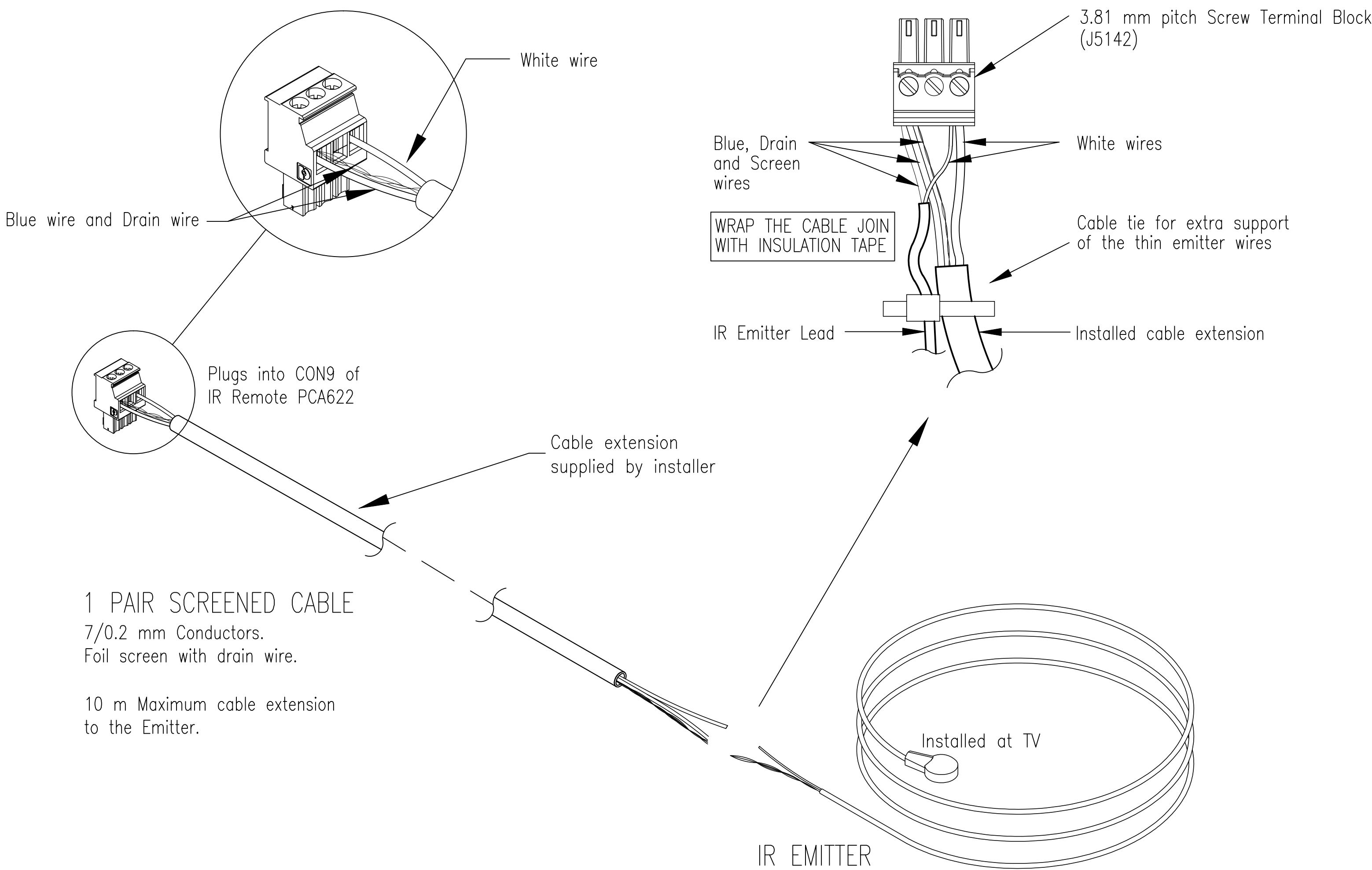
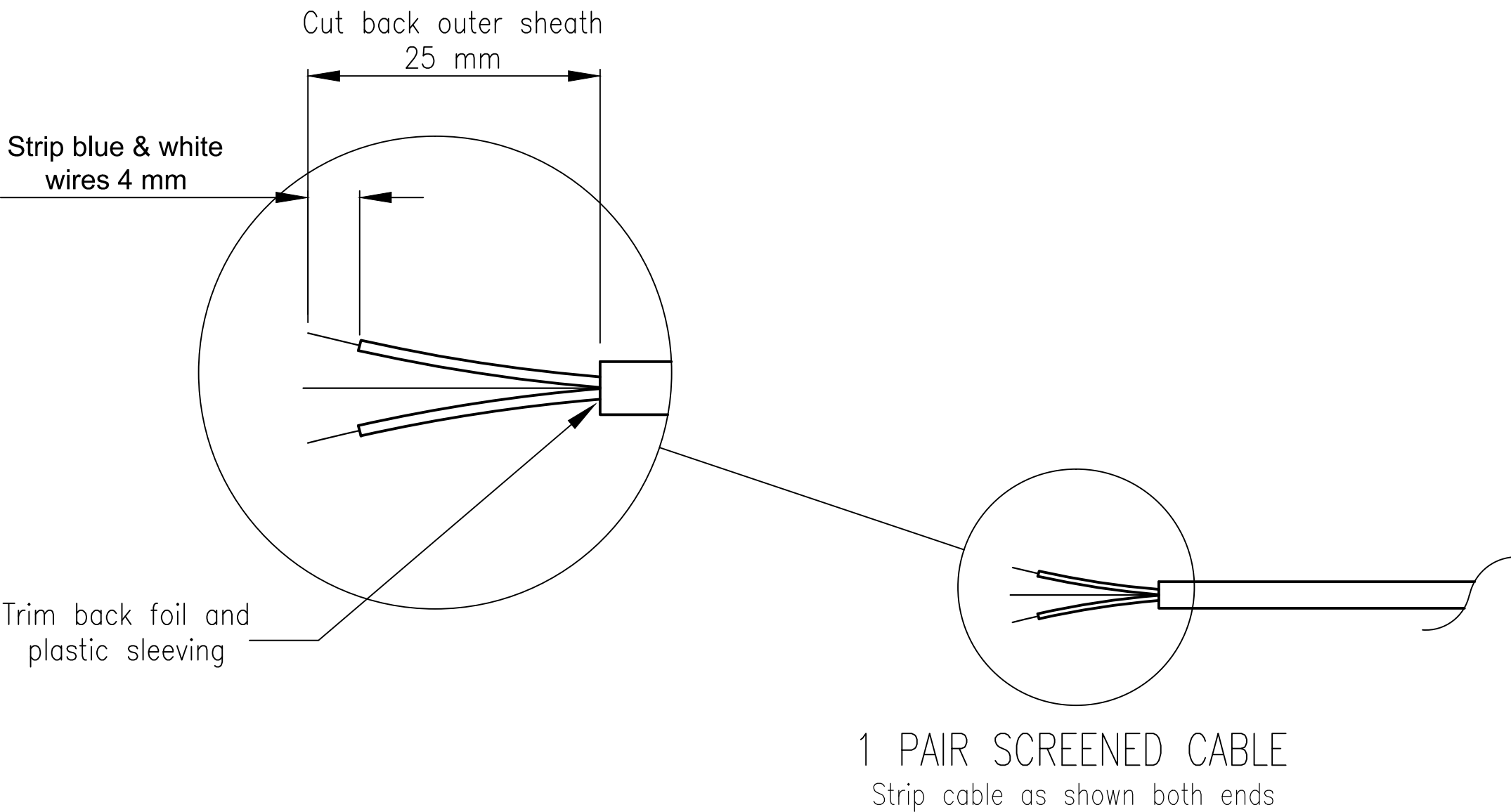
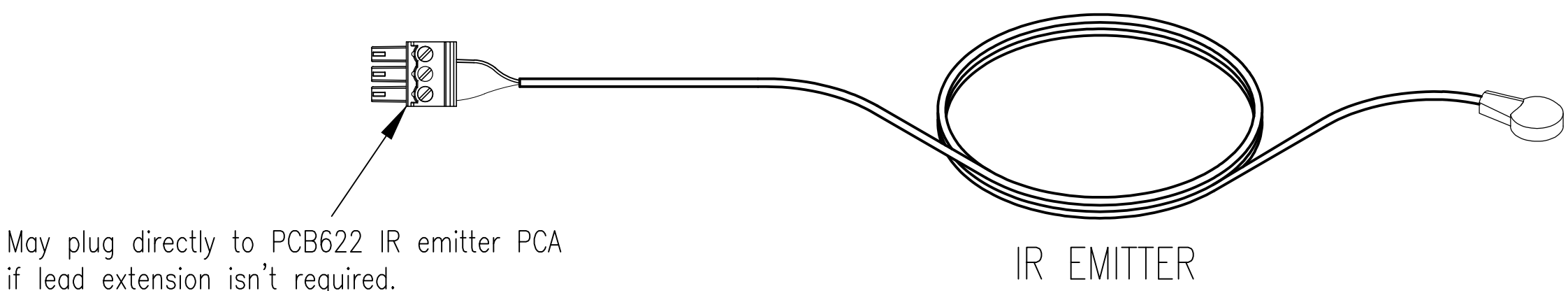
SURFACE WALL MOUNTING USING **SWE-1/SWE-9** BACKBOX



REV	DATE	CHANGE DESCRIPTION	BY
0	2011-12-20	FIRST RELEASE	LFB
1	2017-07-05	DIMENSION 145, CORRECTED TO 290. DRAWING FRAME UPDATED.	LFB
2	2019-11-07	J0097 CHANGED TO J5142. 3W PLUG, J5142 SHOWN FITTED TO EMITTER CABLE (FITTED AT ASSEMBLY STAGE INTERCOM).	LFB

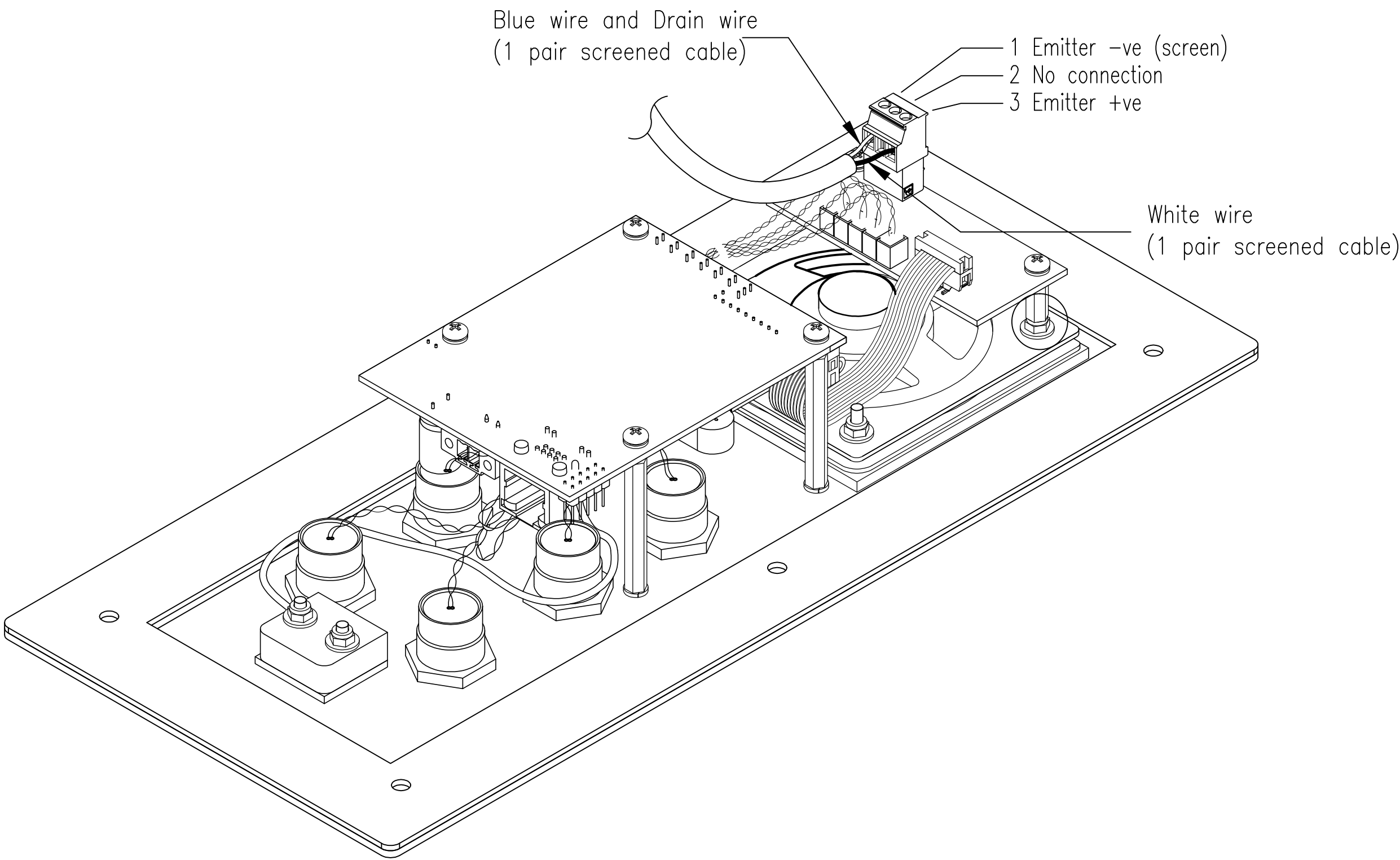
		(C) Copyright Jacques Technologies Pty Ltd. All rights reserved. 28-30 Bank Street, West End Q 4101 Ph: +61 7 3846 8400 www.jacques.com.au info@jacques.com.au	
VSL-346RC VoIP INTERCOM with TV INSTALLATION DETAILS			
DRAWN: LFB	DATE: 2011-12-20	ADAPTED FROM:	FILENAME: 51520-INS.dwg
CHECKED:	DATE:	SCALE: N.T.S.	SHEET: 2 of 3
APPROVED:	DATE:	DWG NO: 51520-INS	SIZE: A1
			REV: 2

DO NOT SCALE  
IF IN DOUBT - ASK!



1 PAIR SCREENED CABLE  
7/0.2 mm Conductors.  
Foil screen with drain wire.

10 m Maximum cable extension to the Emitter.



REV	DATE	CHANGE DESCRIPTION	BY
0	2011-12-20	FIRST RELEASE	LFB
1	2017-07-05	DIMENSION 145, SHT 2, CORRECTED TO 290. DRAWING FRAME UPDATED.	LFB
2	2019-11-07	J0097 CHANGED TO J5142. 3W PLUG, J5142 SHOWN FITTED TO EMITTER CABLE (FITTED AT ASSEMBLY STAGE INTERCOM).	LFB

**JACQUES**  
Future Proof Communications

(C) Copyright Jacques Technologies Pty Ltd. All rights reserved.  
268 Montague Rd., West End, 4101, Australia  
Ph: +61 7 3846 8400  
www.jacques.com.au info@jacques.com.au

## VSL-346RC VoIP INTERCOM with TV INSTALLATION DETAILS

DRAWN: LFB	DATE: 2011-12-20	ADAPTED FROM:	FILENAME: 51520-INS.dwg
CHECKED:	DATE:	SCALE: N.T.S.	SHEET: 3 of 3
APPROVED:	DATE:	DWG NO: 51520-INS	REV: 2