

PA & SPEAKERS

SVR-100 5W | 50909



Features

100 V line vandal resistant speaker
Marine grade 316 stainless steel face plate
Quality audio output
Low profile speaker

Specifications

Audio Characteristics

Speaker	1 x 8 Ω, 8 W RMS, 4 in dual cone
Frequency Response	100 Hz – 15 kHz (±6 dB)
Sensitivity	90 db SPL, 1 kHz, 1 W, 1 m
100 V Line Power Taps	(0.33, 0.66, 1.25, 2.5, 5) W (SVR-100 5 W) (1.25, 2.5, 5, 10, 15) W (SVR-100 15 W / 15 W LP)

General

Operating Temperature	(-20 - 55)°C (-4 - 131)°F
Operating Humidity	(10 - 95) % relative humidity (non-condensing)
Form Factor	Circular flush wall panel or surface mount with CSH-1
Dimensions (Ø x D)	170 mm x 65 mm (6.6 in x 2.5 in) SVR-100 5 W 170 mm x 125 mm (6.6 in x 4.9 in) SVR-100 15 W 170 mm x 67 mm (6.6 in x 2.6 in) SVR-100 15 W LP
Weight	1.2 kg (2.6 lb) SVR-100 5 W 1.3 kg (2.8 lb) SVR-100 15 W / 15 W LP
Material	316 stainless steel
Finish	Linish, chamfered edge
Environment	Non rain exposed area
Mounting Options	Flush mount direct into ceiling or wall, surface mount backbox (CSH-1)

External Connections

Cabling	Figure 8, 0.75 mm ² (0.001 in ²) multi-strand (typical)
Connectors	4 way screw terminal block

Compliance

EWIS Standard	AS1670.4 (SVR-100/5W)
---------------	-----------------------

Speaker Variations

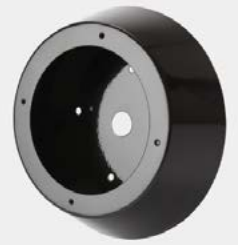
SVR-100 15W 50007	15 W high profile version
SVR-100 15W LP 51706	15 W low profile version

Optional Accompanying Products

Universal Audio Interface (UAI-3B1)

SPEAKER MOUNTING

CSH-1 | 50620



Features

Suitable surface mount housing for SVR-100 low profile speakers
Material 304 stainless steel
Powder coated, matte, black finish

Specifications

Suitable For	SVR-100 LP series
Dimensions (Ø x D)	231 mm x 71 mm (9 in x 2.7 in)
Weight	1.2 kg (2.6 lb)
Material	304 stainless steel
Finish	Powder coated, matte, black
Environment	Non rain exposed area
Speaker Mounting Holes	4 x M4 threaded holes
Fixings	4 holes x 4.5 mm (0.18 in) diameter, M4 security torx screws
Cable Entry	2 holes x 25 mm (0.98 in) rear