

Overview

The Jacques to Pacom High Level Interface (HLI) allows the Jacques Integrated Communication System (650 series) to integrate into the Pacom Graphical Management System (GMS). The Pacom GMS provides the convenience for system operators to respond to calls, perform actions and monitor the status of the Jacques system. All this is done while leaving the intercom system to handle the task for which it was primarily designed - audio communications, providing a very powerful and completely integrated security environment.

GMS includes an intuitive Intercom Manager which allows all intercom call requests to be prioritized and queued. When a call request is received it is added to the Intercom Manager and the intercom icon on the sitemap will change color to reflect its status and a sound file can be played. When the call is selected by a GMS operator, it remains within the call list of the Intercom Manager on his/her workstation, but is removed from the list on all other workstations.

Specific actions can be performed automatically when receiving or responding to intercom calls. For example, when an intercom call is made or an operator responds, it may trigger the lights to switch on or even live video to be displayed on the GMS Workstation. The GMS Intercom Module has been designed to be as flexible as possible, and it uses scripts to allow a multitude of actions to be programmed to suit any security environment.

Efficiencies can be gained by linking the intercom system with GMS access control. When a card reader is associated with an intercom unit, the access control decision can be transferred to the GMS operator. This allows the operator to quickly and easily remotely unlock the door for authorized users. After presentation of a card, the GMS operator will be displayed the intercom location, instructions, cardholder's name, department, personal ID and photo and have the option to "Allow" or "Deny" access to that door. Multiple readers can also be associated with the same intercom if necessary to allow the operator to select the appropriate door to open.

Functionality

Intercom Functions

The below listed intercom functionality is available at the Pacom GMS

- Make intercom calls
- Receive intercom calls
- Terminate intercom calls
- Forward intercom calls
- Place intercom on hold
- Pending intercom call notification (call queue)
- Control music streaming function of intercom
- Remote or isolate intercoms

Relays & Events

- Trigger alarm - intercom event
- Trigger alarm - activate intercom associated 3rd party CCTV
- Trigger alarm - activate intercom associated 3rd party CCTV along with audio from intercom
- Activate door/gate relay

Diagnostics & Reporting

- System controller connection status
- Monitor endpoint status change (online/offline/alarm)
- Events logging
- Alarms and alerts logging

Recording

- Records intercom associated 3rd party CCTV
- Export recordings

Graphical Maps

- Display Jacques Intercoms on Graphical Maps
- Dynamically change the display of Jacques intercoms based on their current status
- Control Jacques intercoms from Graphical Maps
- Automatically zoom in on intercoms based on alarm trigger events

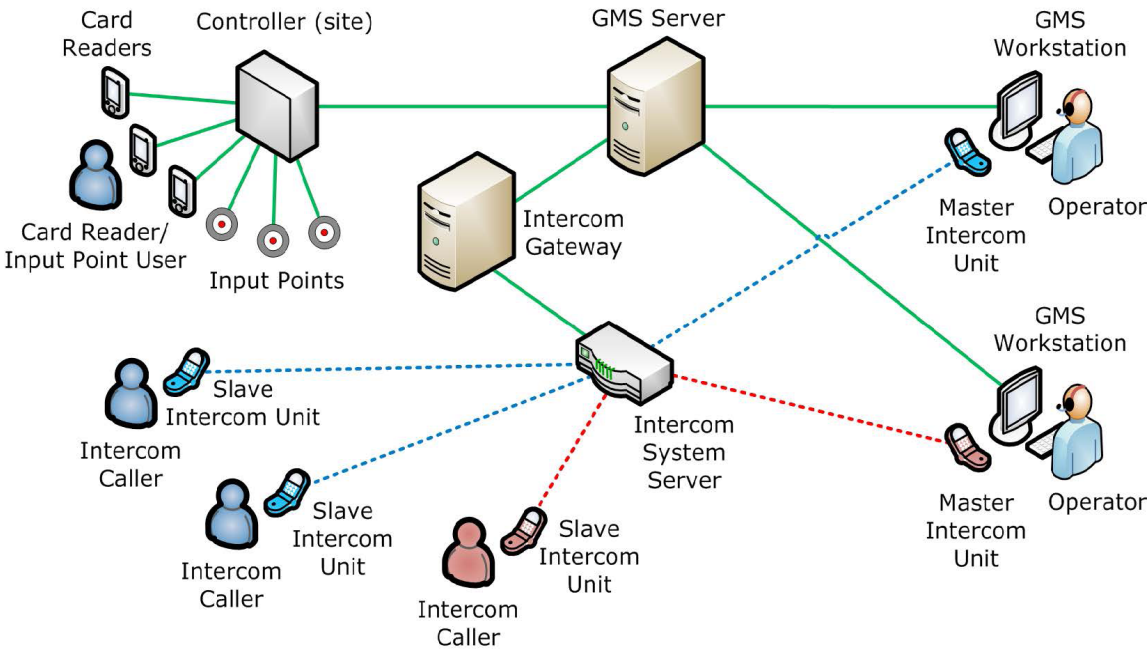
Alarm Management

- Automatically control intercoms based on alarms received from 3rd party system
- Automatically control doors, areas, relays etc. based on events from Jacques system
- Automatically control compatible 3rd party systems (e.g. CCTV) based on events from Jacques system

Additions

- Log of all Intercom Based Activity
- Display of all Active Intercom calls
- Partitioning of intercom handling based on privilege level
- Assign call priorities
- Programmable timeout for intercom calls

Pacom Graphical Management System



Versions

Pacom Graphical Management System 4.30
Jacques IP Communication System including Event Controller V7.87 and above

Developer

Pacom