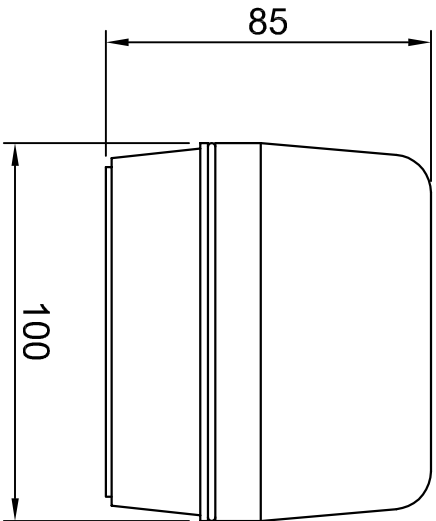
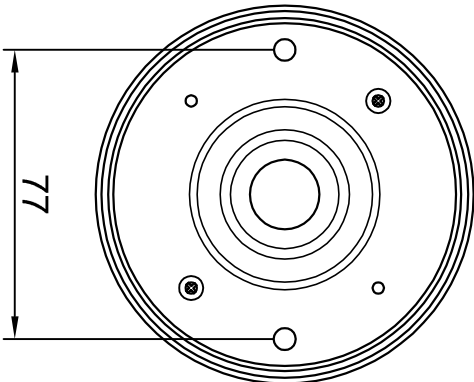


FLASHING AMBER STROBE

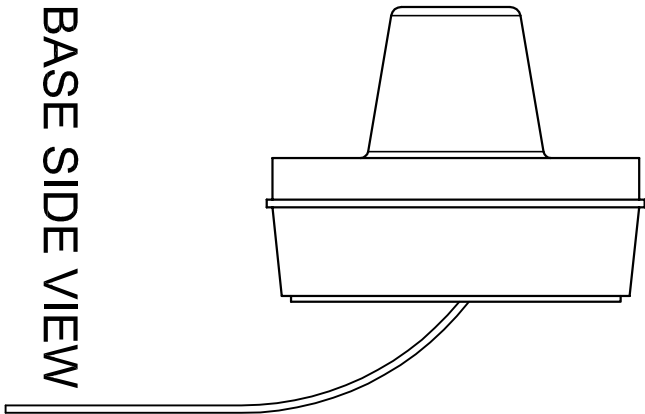
(Manufacturers P/N : S5435)



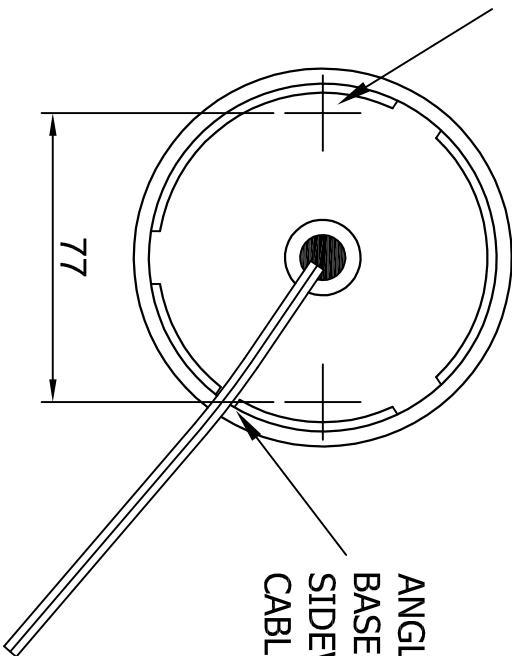
VIEW SHOWING OVERALL
DIMENSIONS



BASE (TOP)
(showing mounting holes)



BASE SIDE VIEW

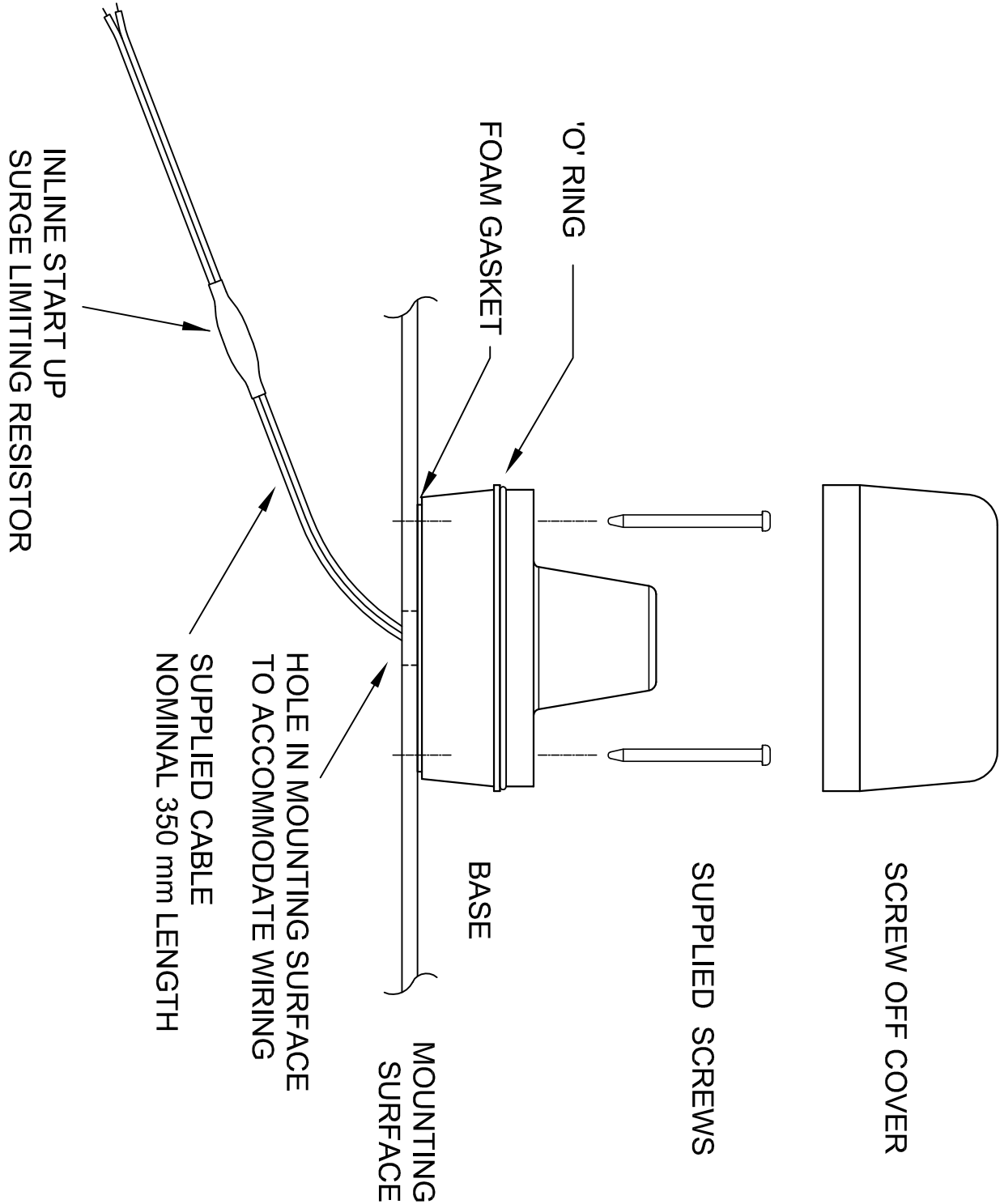


BASE (BOTTOM)
(showing mounting holes)

MOUNTING HOLES TO BE
DRILLED THROUGH BASE
AND GASKET FROM FRONT.
USE SUPPLIED SCREWS OR
SUITABLE ALTERNATIVE FOR
FIXING.

ANGLED SLOT EXISTS IN
BASE FOR OPTIONAL
SIDEWAYS, ON SURFACE,
CABLE ROUTING.

VIEW SHOWING MOUNTING
OF STROBE TO MOUNTING SURFACE



NOTES:

PREFERED MOUNTING ORIENTATION
CEILING - DOWNWARD FACING
POLE TOP - UPWARD FACING

SUPPLY
24 V d.c. NOMINAL
250 mA
FLASH RATE
1.5 Hz

<div><div><div><div><div></div><div>↖</div></div><div><div>↖</div><div>↖</div></div></div><div><div>↖</div><div>↖</div></div></div><div>INLINE START UP SURGE LIMITING RESISTOR</div></div>					<div><div><div>SUPPLIED CABLE NOMINAL 350 mm LENGTH</div></div></div>					
					REV	DATE	CHANGE DESCRIPTION		BY	
					0	2019-12-18	FIRST RELEASE		LFB	