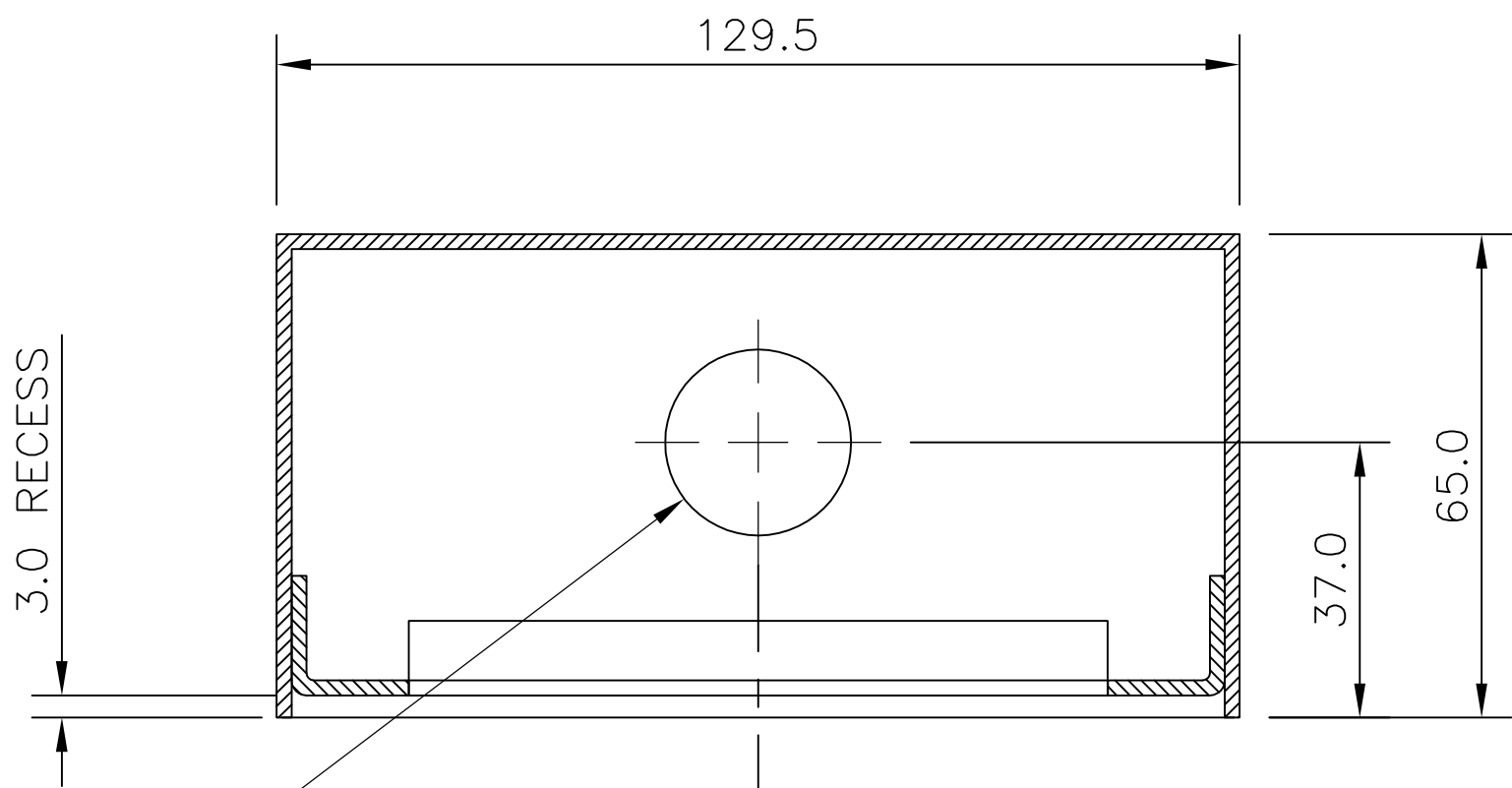


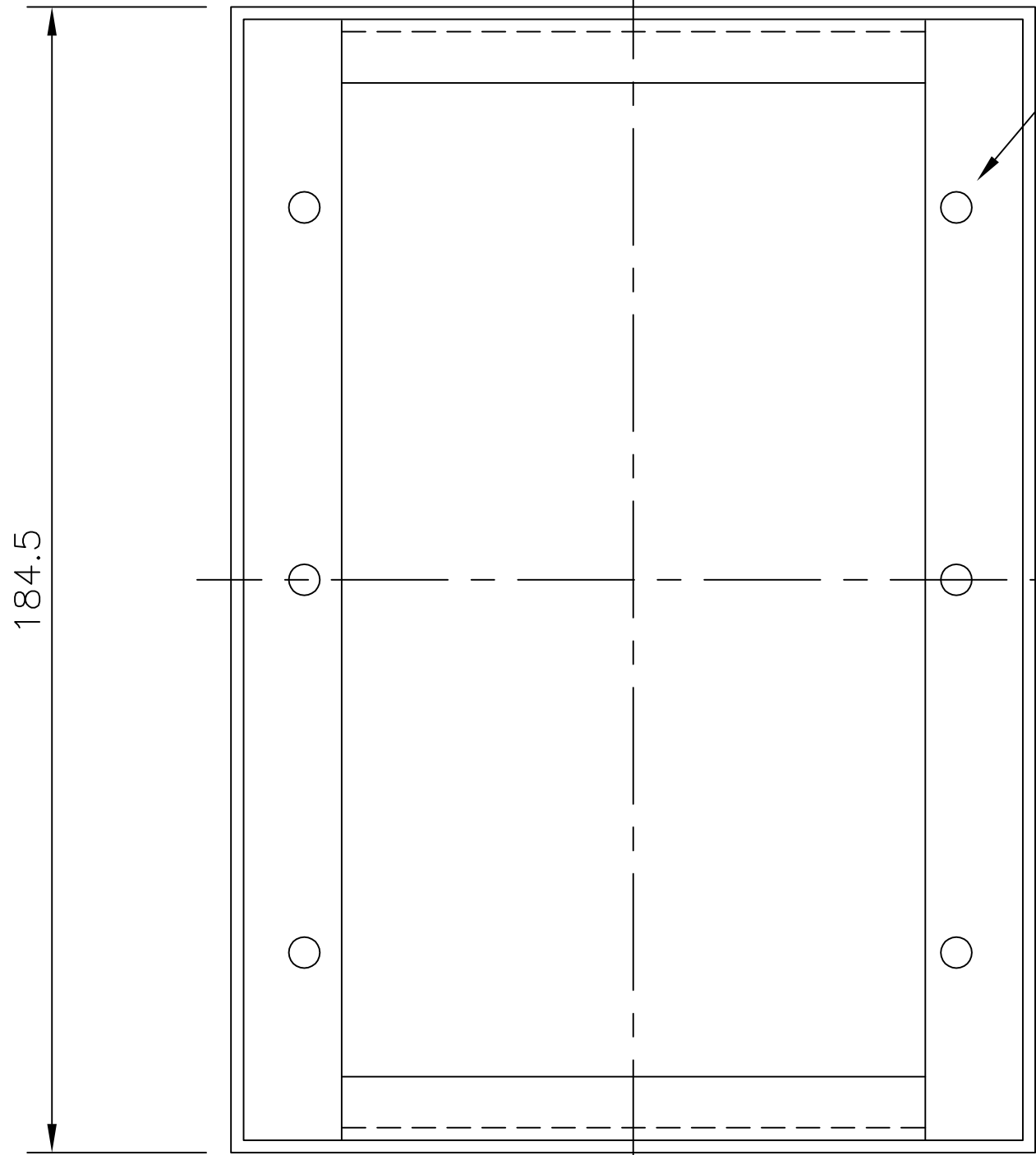
DO NOT SCALE

IF IN DOUBT - ASK!

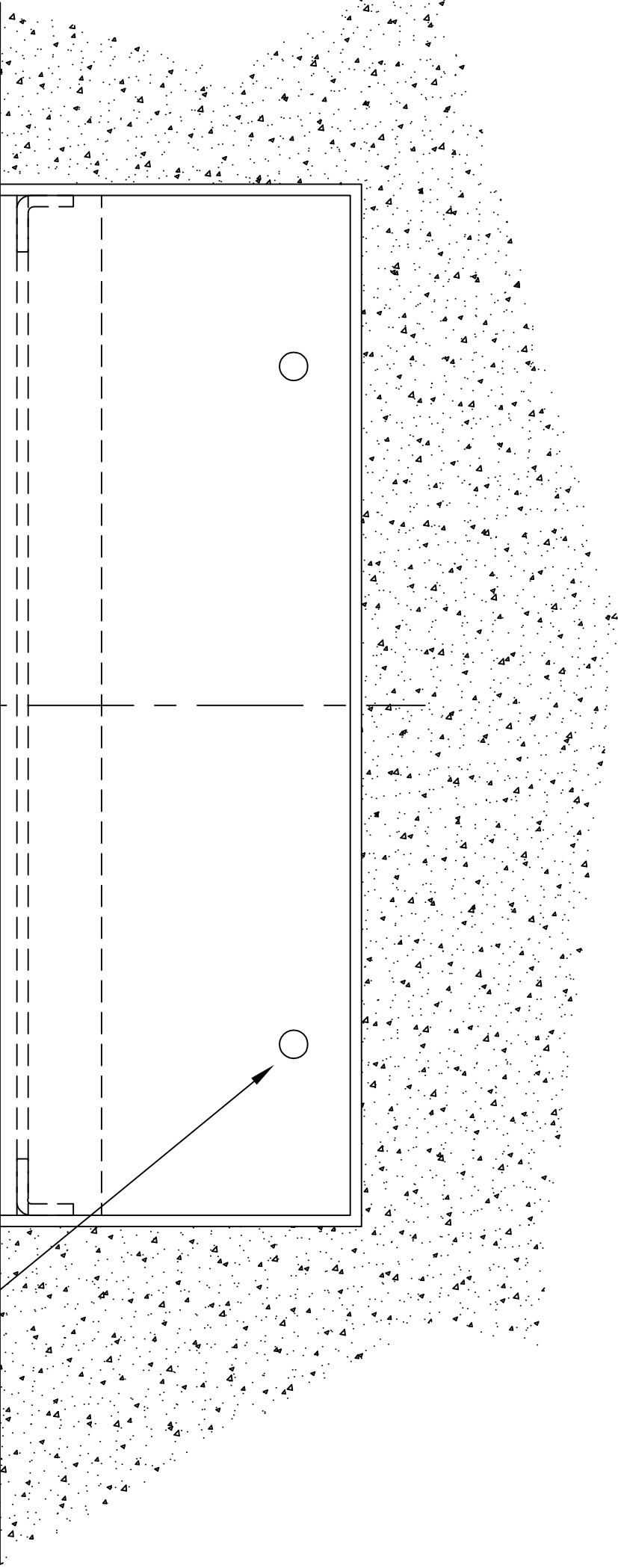


1 x $\varnothing 25$ mm
CONDUIT ENTRY HOLE

ADDITIONAL OR DIFFERENT POSITION
HOLES MAY BE REQUESTED AS A
CUSTOMISATION




6 HOLES $\varnothing 5.0$



4 HOLES $\varnothing 5.0$

MATERIAL: 2 mm THICK 304 STAINLESS STEEL

INTERIOR WALL INSTALLATIONS ONLY.
FOR NON-WATER EXPOSED AREAS.

REV	DATE	CHANGE DESCRIPTION	BY	<div><div>(C) Copyright Jacques Technologies Pty Ltd. All rights reserved. 268 Montague Rd., West End, 4101, Australia Ph: +61 7 3846 8400 Fax: +61 7 3844 1078 www.jacques.com.au info@jacques.com.au</div></div>		
0	2001-06-26	FIRST RELEASE	DH			
1	2017-10-13	2 $\varnothing 25$ HOLES REMOVED. TOP VIEW CORRECTED. NOTES ADDED. NEW FRAME ADDED.	LFB			
				FWE-3 FLUSH WALL ENCLOSURE WITH 3mm RECESS - INSTALLATION DIMENSIONS		
				DRAWN: DH	DATE: 2001-06-26	ADAPTED FROM: N/A
				CHECKED:	DATE:	SCALE: N.T.S.
				APPROVED:	DATE:	DWG NO: MW408-INS
						FILENAME: MW408-INS.dwg
						SHEET: 1 of 1
						SIZE: A2
						REV: 1