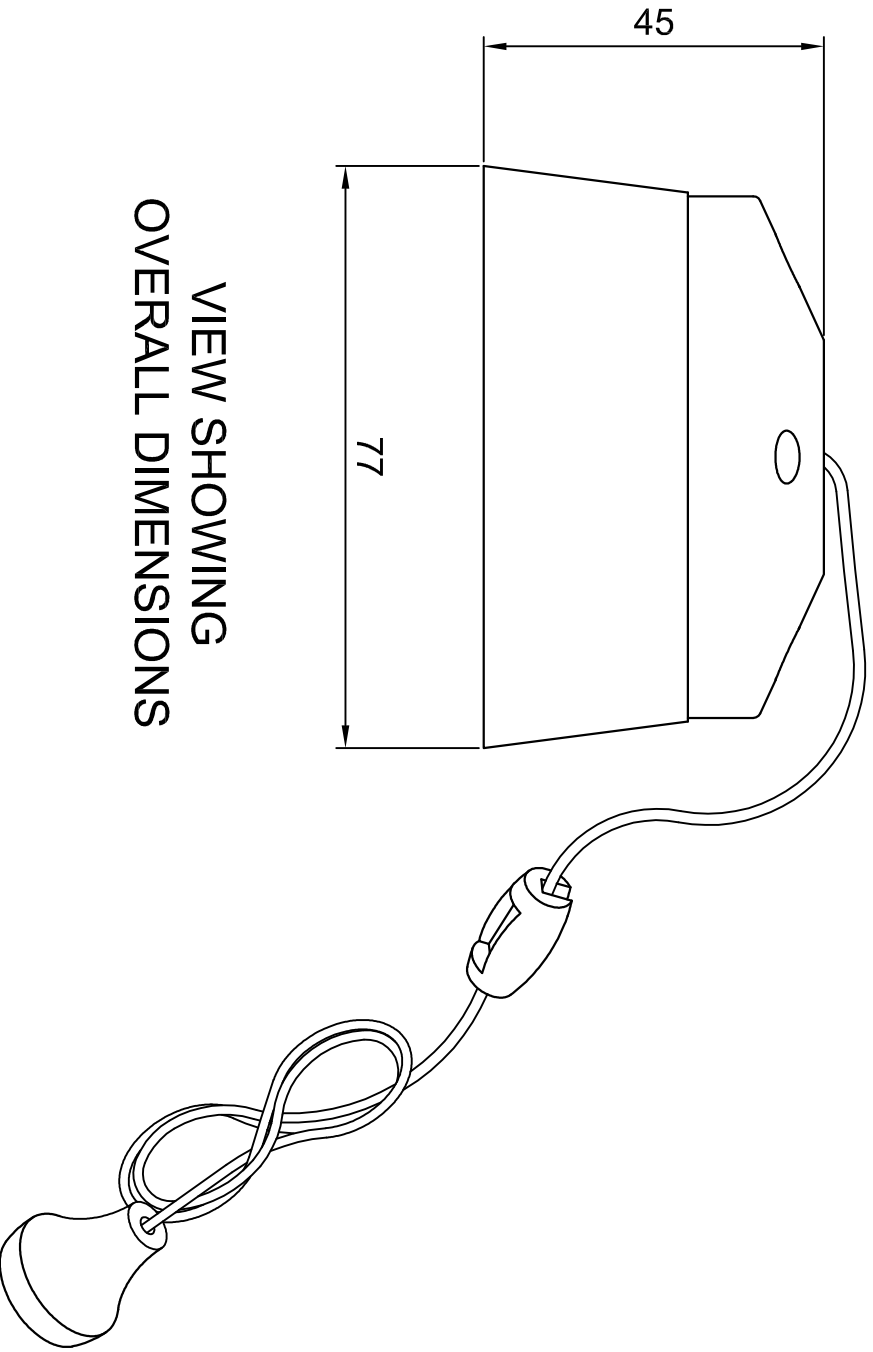
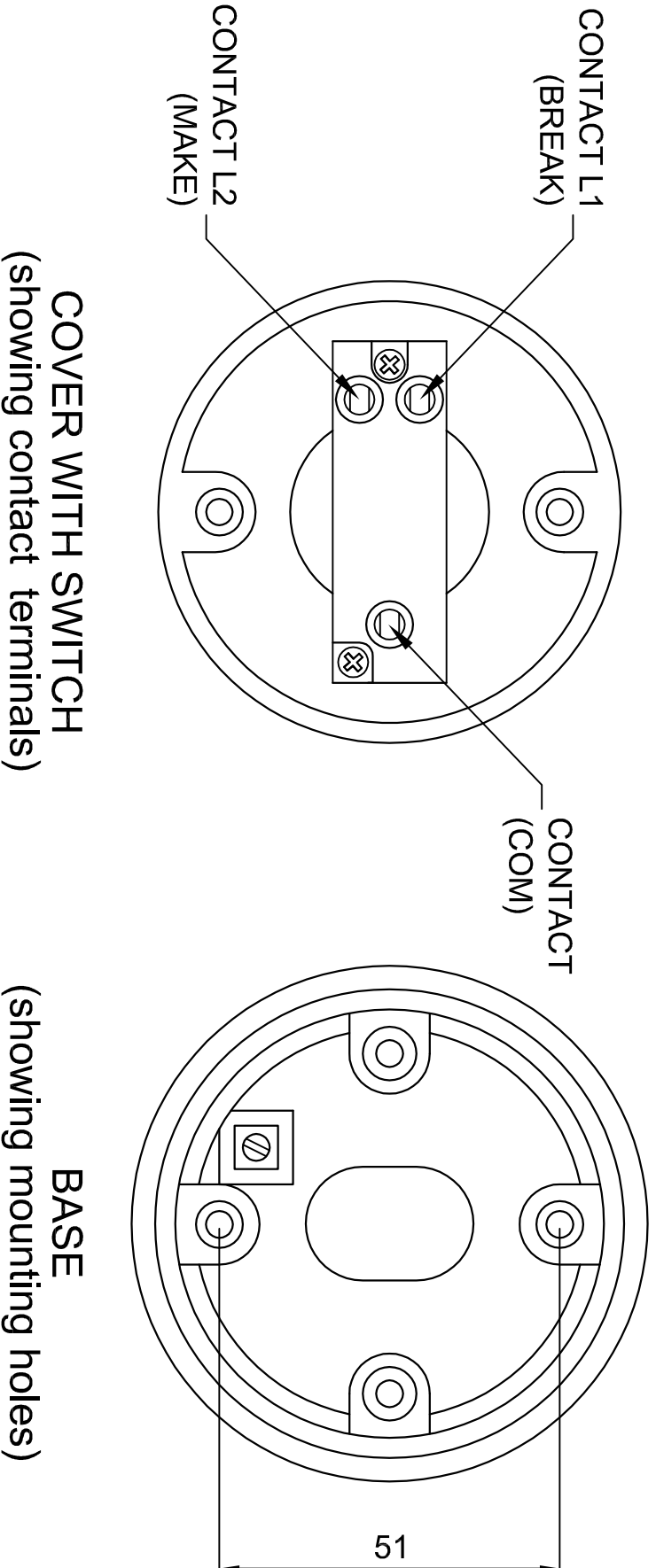


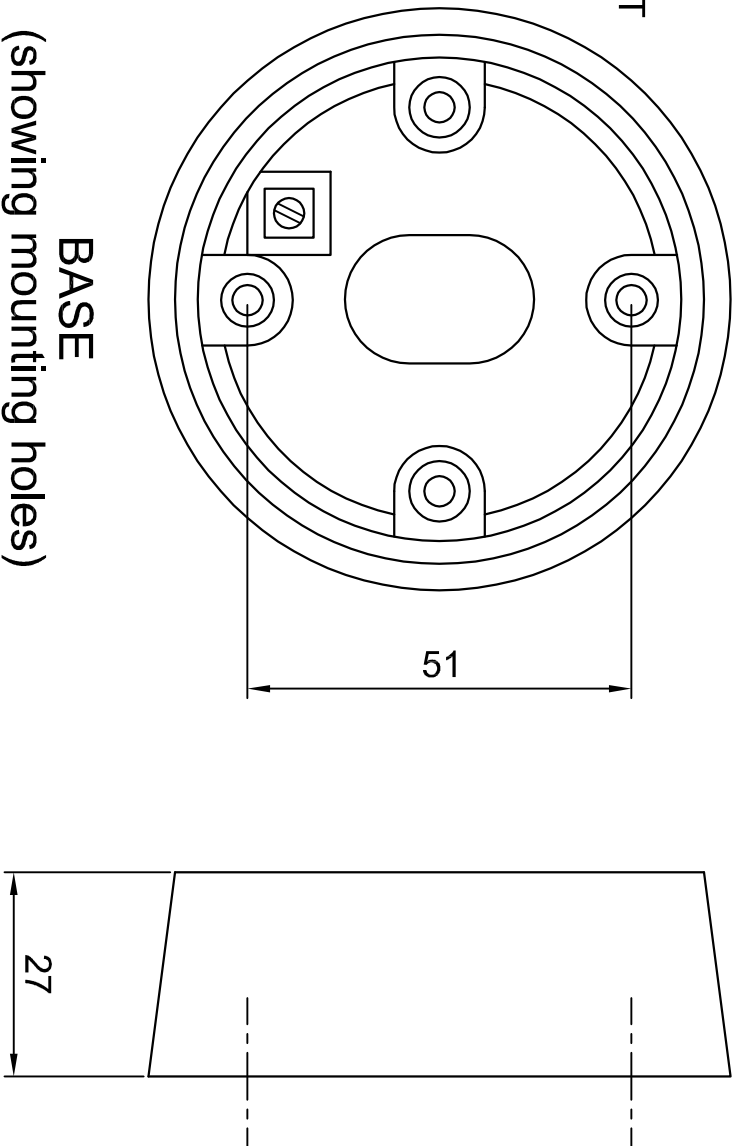
PULL CORD SWITCH FOR DISABLED INTERCOM
(Manufacturers P/N : 3190 RC WHI)



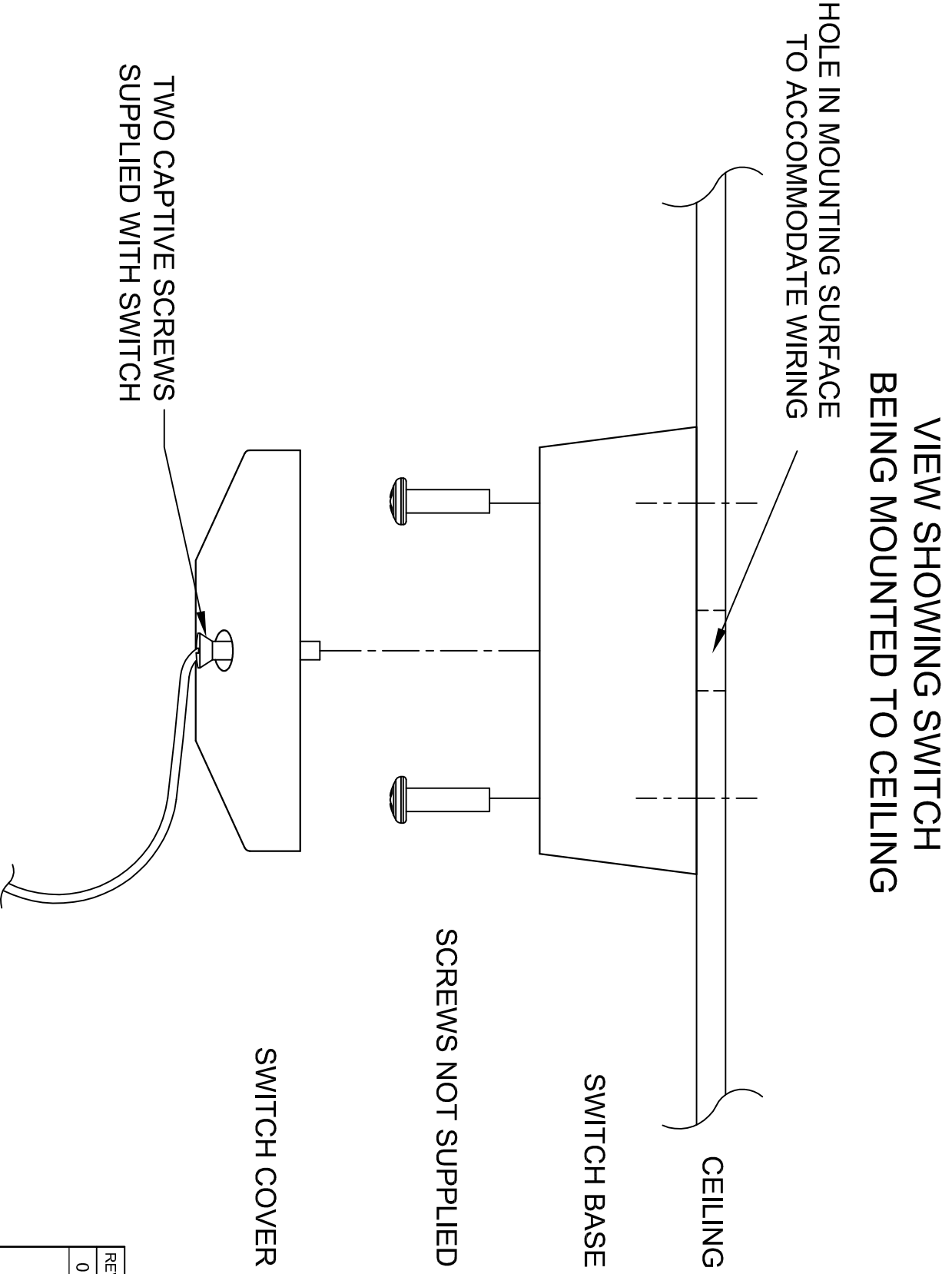
VIEW SHOWING
OVERALL DIMENSIONS



COVER WITH SWITCH
(showing contact terminals)



BASE SIDE VIEW



VIEW SHOWING SWITCH
BEING MOUNTED TO CEILING

HOLE IN MOUNTING SURFACE TO ACCOMMODATE WIRING

SWITCH BASE

SCREWS NOT SUPPLIED

SWITCH COVER

CONTACT RATING:
250 V.a.c.
6 A
Change over type (SPDT)
Momentary operation

REV	DATE	CHANGE DESCRIPTION	BY
0	2019-12-18	FIRST RELEASE	LF8



JACQUES
Future Proof Communications

(C) Copyright Jacques Technologies Pty Ltd. All rights reserved.
28-50 Bank Street, West End Q.4101
Ph: +61 7 3946 8400
www.jacquess.com.au
info@jacques.com.au

PULL CORD SWITCH FOR DISABLED
INTERCOM-INSTALLATION DETAILS

DRAWN:	DATE:	ADAPTED FROM:	FILENAME:
LFB	2019-12-16	N/A	SW374-INS.dwg
CHECKED:	DATE:	SCALE:	SHEET: SIZE:

	N.T.S.	1 of 1	A2
APPROVED:	DATE:	DWG NO:	REV:

©2019 Jacques Technologies PTY LTD