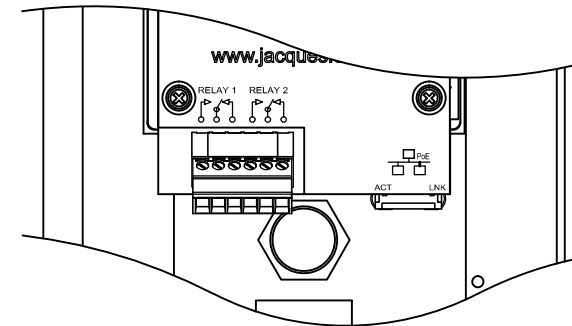
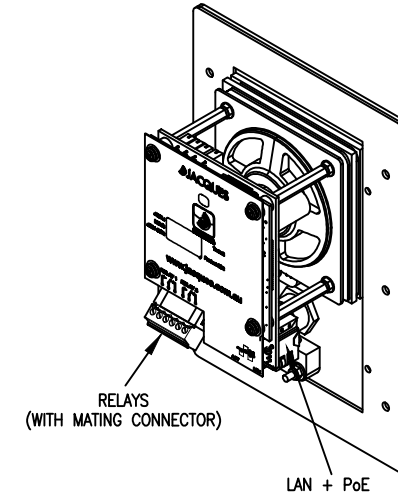
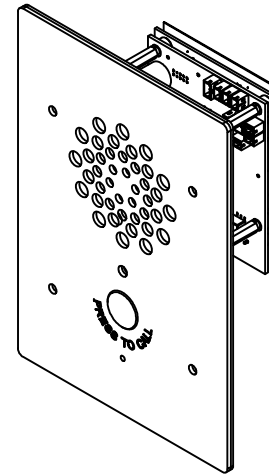
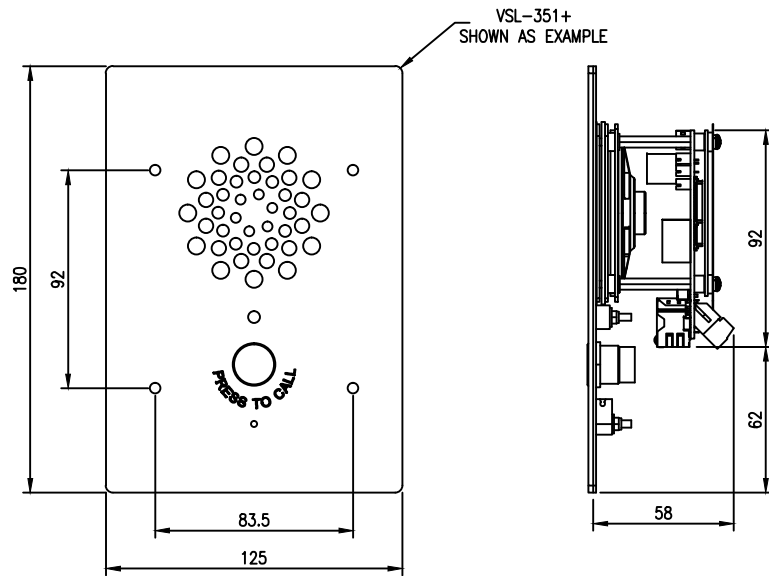
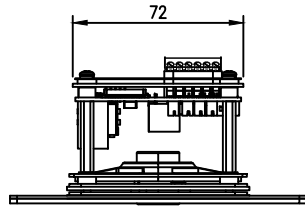


DO NOT SCALE  
IF IN DOUBT - ASK!



VSL-35x+ JEM-2+ INTERCOM STATION

MODELS:

- VSL-351+ (51612)
- VSL-354+ (51613)

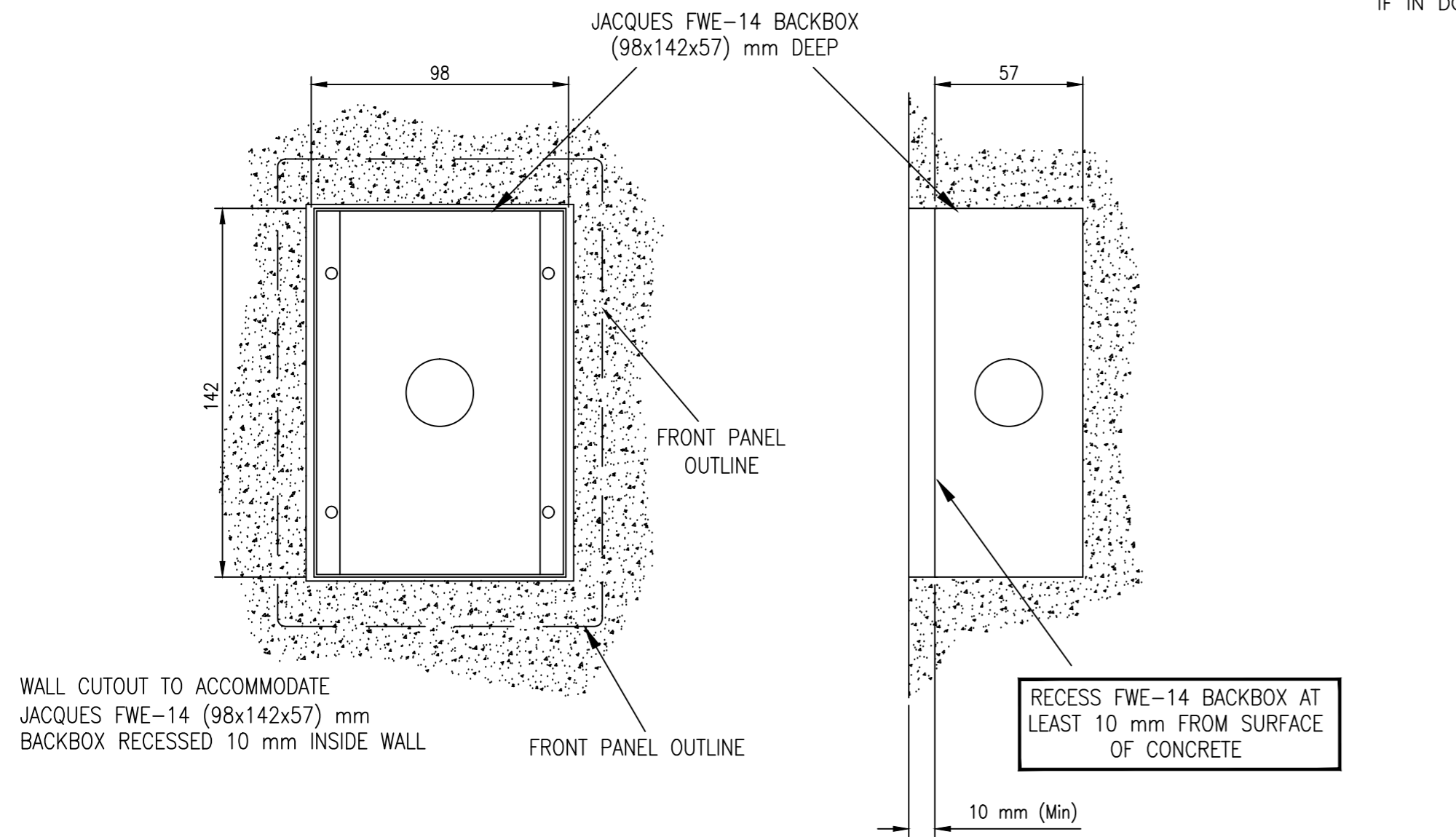
Notes:

1. Power Input: via IEEE 802.3af PoE (Class 2)
2. Relay contacts rating: 30 V d.c. / 2 A

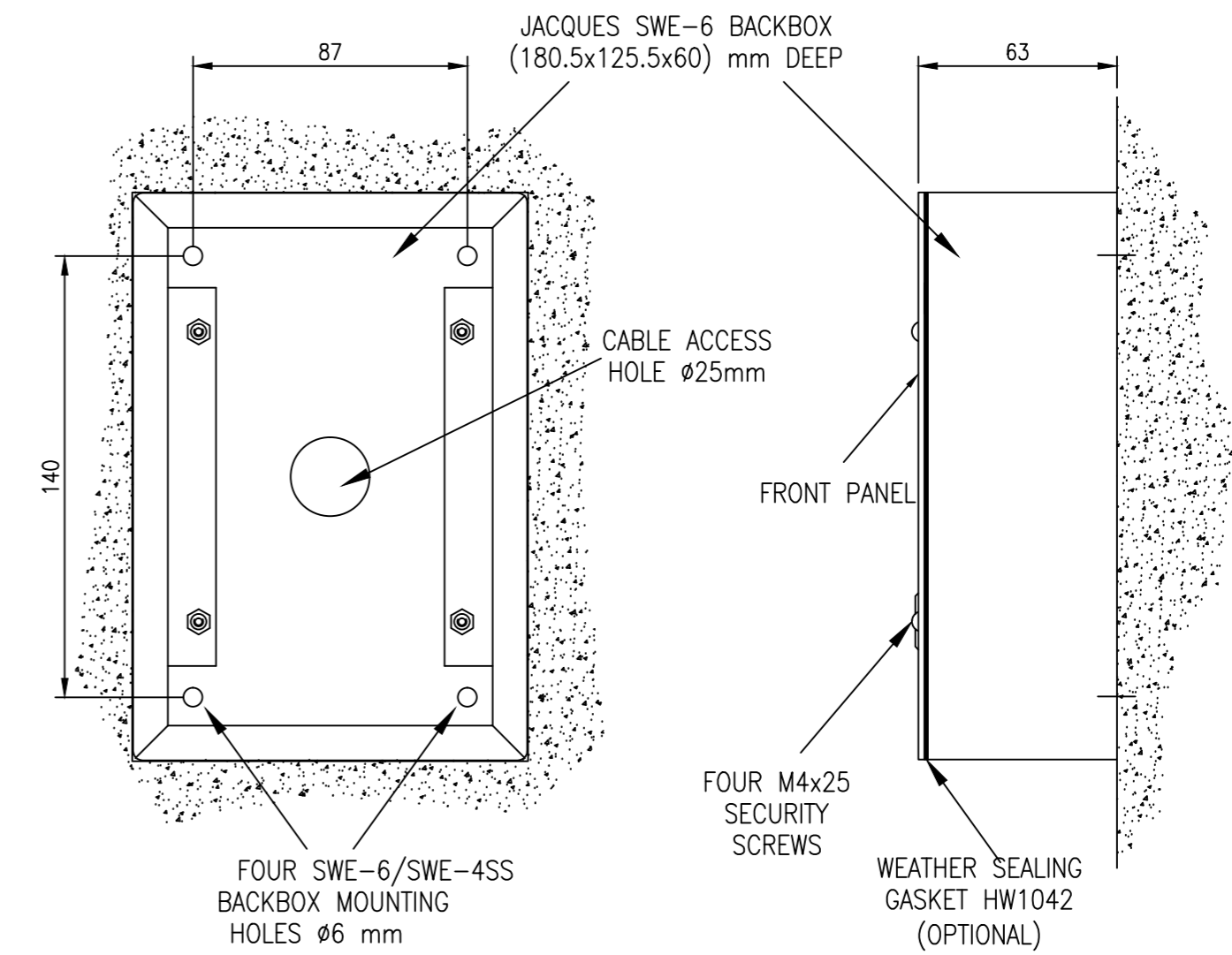
ENLARGED VIEW  
SHOWING CONNECTIONS

FIRST USE & REVISION NOTES		DATE	INIT	JACQUES ELECTRONICS		
1. VSL-35x+ INS-1 replaces VSL-35x INS -0 that had panel with #1.6 speaker holes.		06/06/13	LFB	VSL-35x+ JEM-2+ INTERCOM STATION INSTALLATION DRAWING		
SIZE A3	ADAPTED FROM	REVISION 1	SCALE N.T.S.			
DATE 23/05/2013	DRAWN: CHECKED:	L.F.Buchly		SHEET 1 OF 2		
DWG No. VSL-35x+ INS-1						

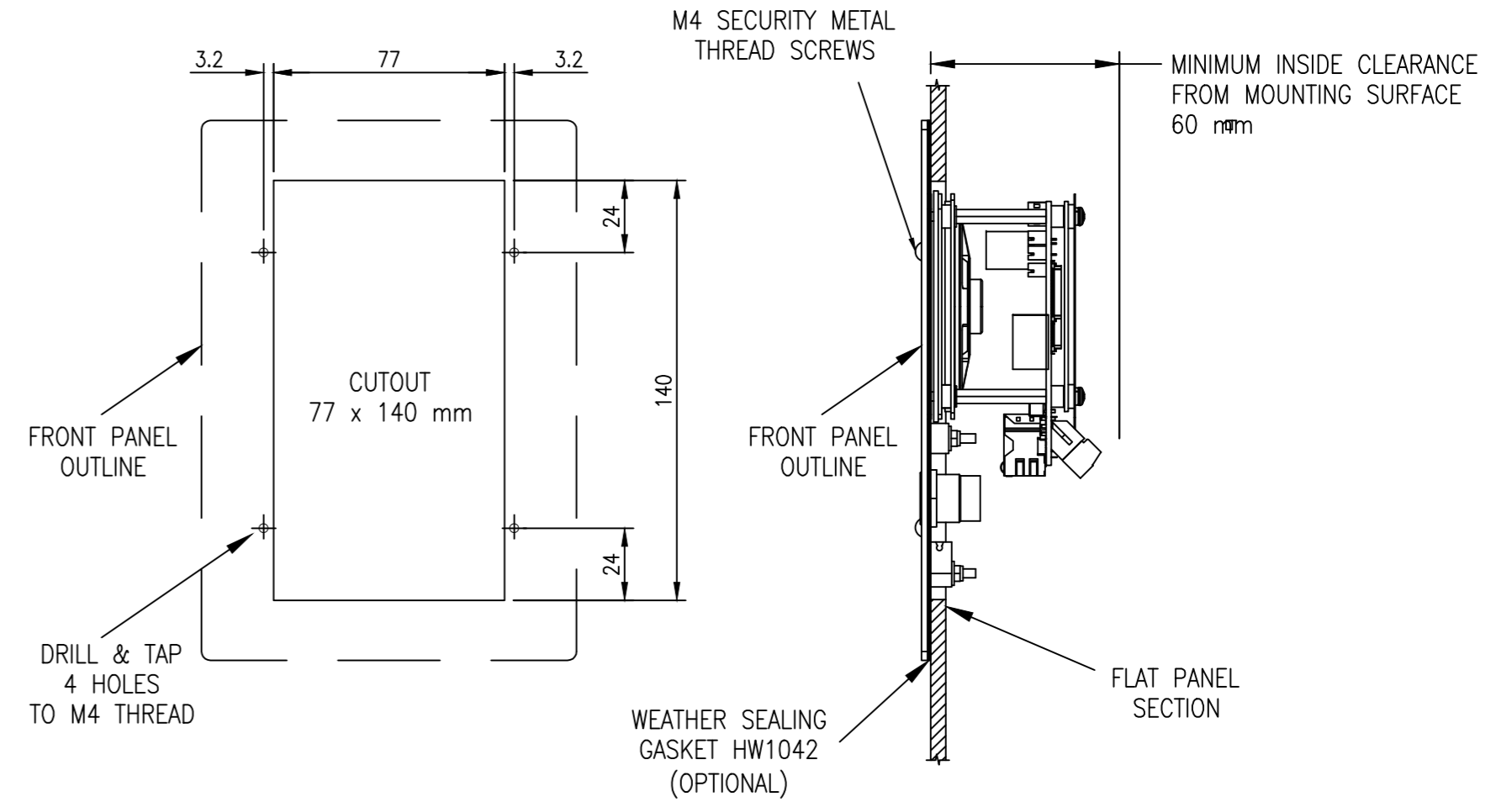
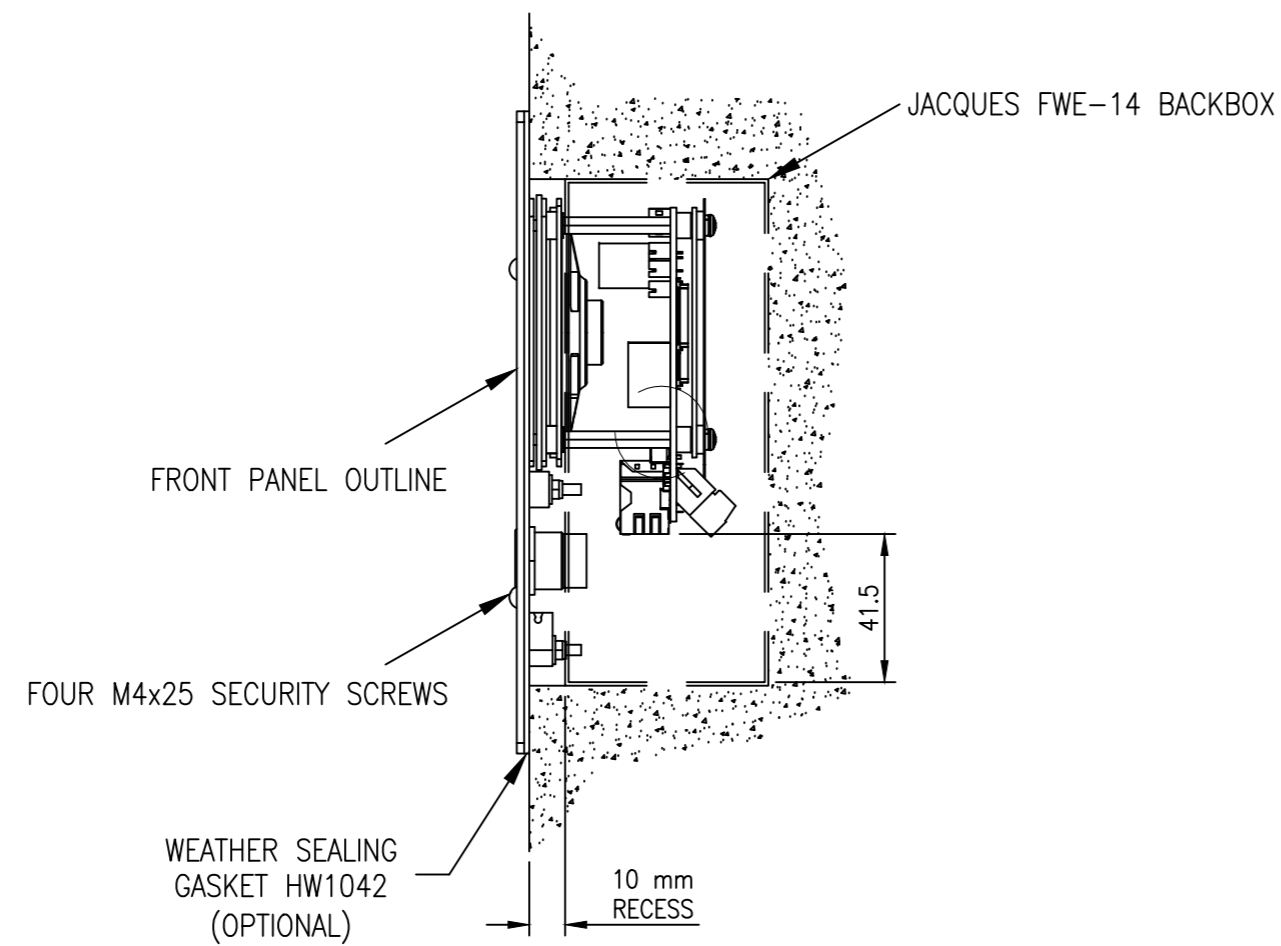
DO NOT SCALE  
IF IN DOUBT - ASK!



FLUSH WALL MOUNT USING FWE-14 BACKBOX



SURFACE MOUNTING USING SWE-6 OR SWE-4SS BACKBOX



FLUSH MOUNTING INTO FLAT PANEL

FIRST USE & REVISION NOTES		DATE	INIT	JACQUES ELECTRONICS		
1. VSL-35x+ INS-1 replaces VSL-35x INS -0 that had panel with 1.6 speaker holes.		06/06/13	LFB	VSL-35x+ JEM-2+ INTERCOM STATION INSTALLATION DRAWING		
SIZE A2	ADAPTED FROM	REVISION 1	SCALE N.T.S.			
DATE 08/04/2013	DRAWN: L.F.Buchly	CHECKED:	SHEET 2 OF 2			
DWG No. VSL-35x+ INS-1						