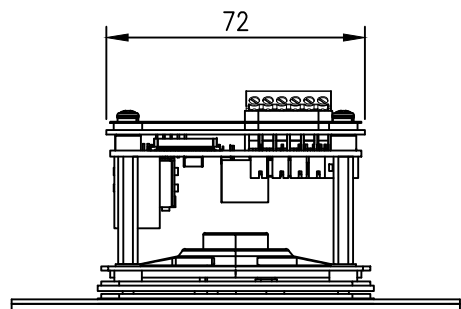
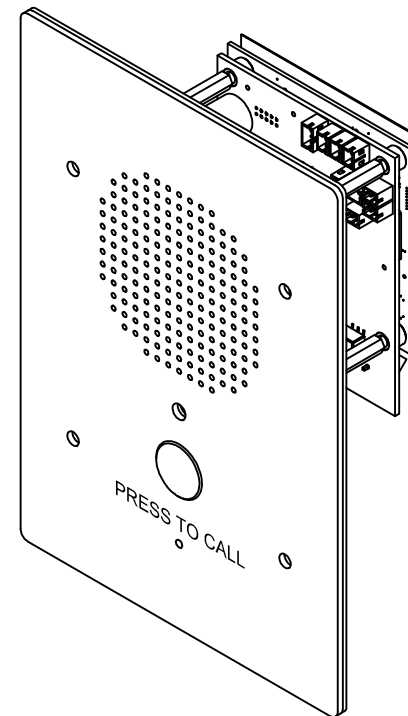
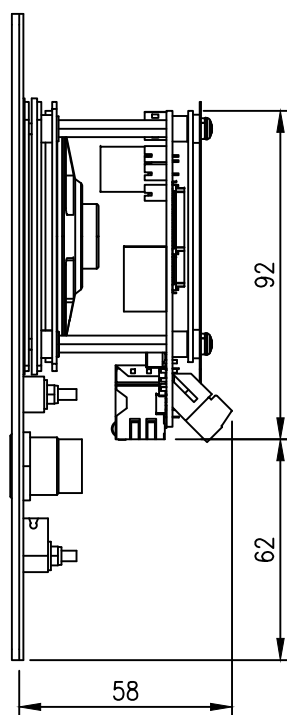
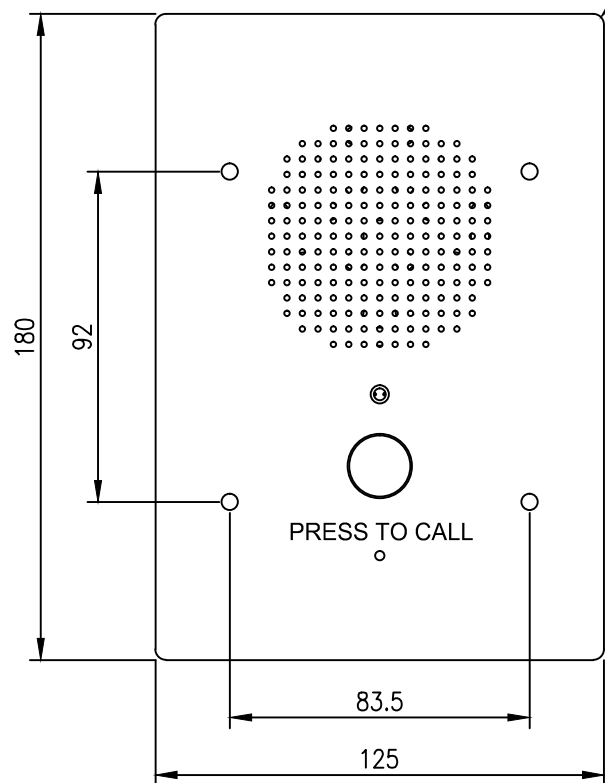


DO NOT SCALE  
IF IN DOUBT - ASK!

# VSL-35xQ+ INTERCOM STATION INSTALLATION



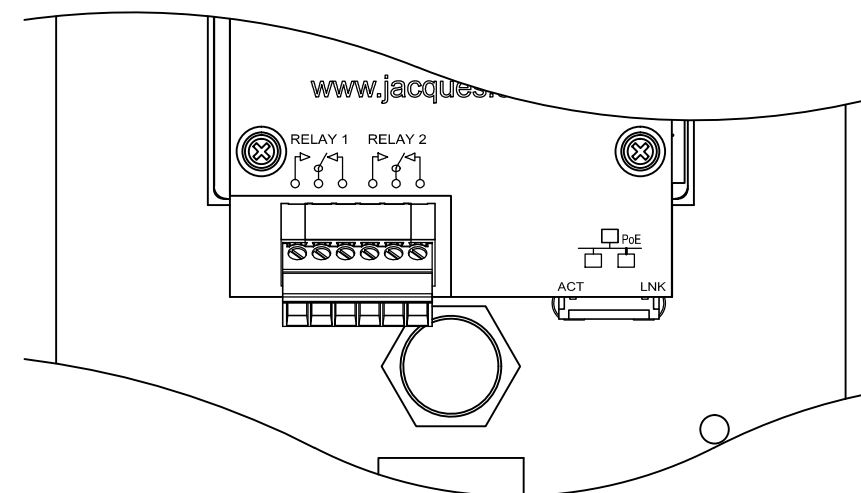
VSL-351Q+  
SHOWN AS EXAMPLE



RELAYS  
(WITH MATING CONNECTOR)

LAN + PoE

NOTE VSL-354QS+ & VSL-351QS+/P  
RELAY CONNECTIONS ARE NOT ACCESSIBLE.



ENLARGED VIEW  
SHOWING CONNECTIONS

## VSL-35xQ+ JEM-2+ INTERCOM STATION

MODELS:

- VSL-351Q+ (51607)
- VSB-351Q+ (51596)
- VSL-351QS+ (51567)
- VSL-354QS+/C1 (51785)

Notes:

1. Power Input: via IEEE 802.3af PoE (Class 2)
2. Relay contacts rating: 30 V d.c. / 2 A

ALL DIMENSIONS IN MILLIMETRES

©2018 Jacques Technologies PTY LTD

REV	DATE	CHANGE DESCRIPTION	BY
1	2013-06-06	GASKET PART NUMBER CORRECTED.	LFB
2	2013-08-08	NOTE ADDED REGARDING VSL-354QS+ & VSL-351QS+/P RELAY CONNECTIONS NOT BEING ACCESSIBLE. DIMENSION 63 CHANGED TO 60 mm IN SURFACE MT VIEW (SHT 2). DWG NO. & FILENAME WAS VSL-35xQ+ INS. IT IS NOW VSL-35xQ+-INS	LFB

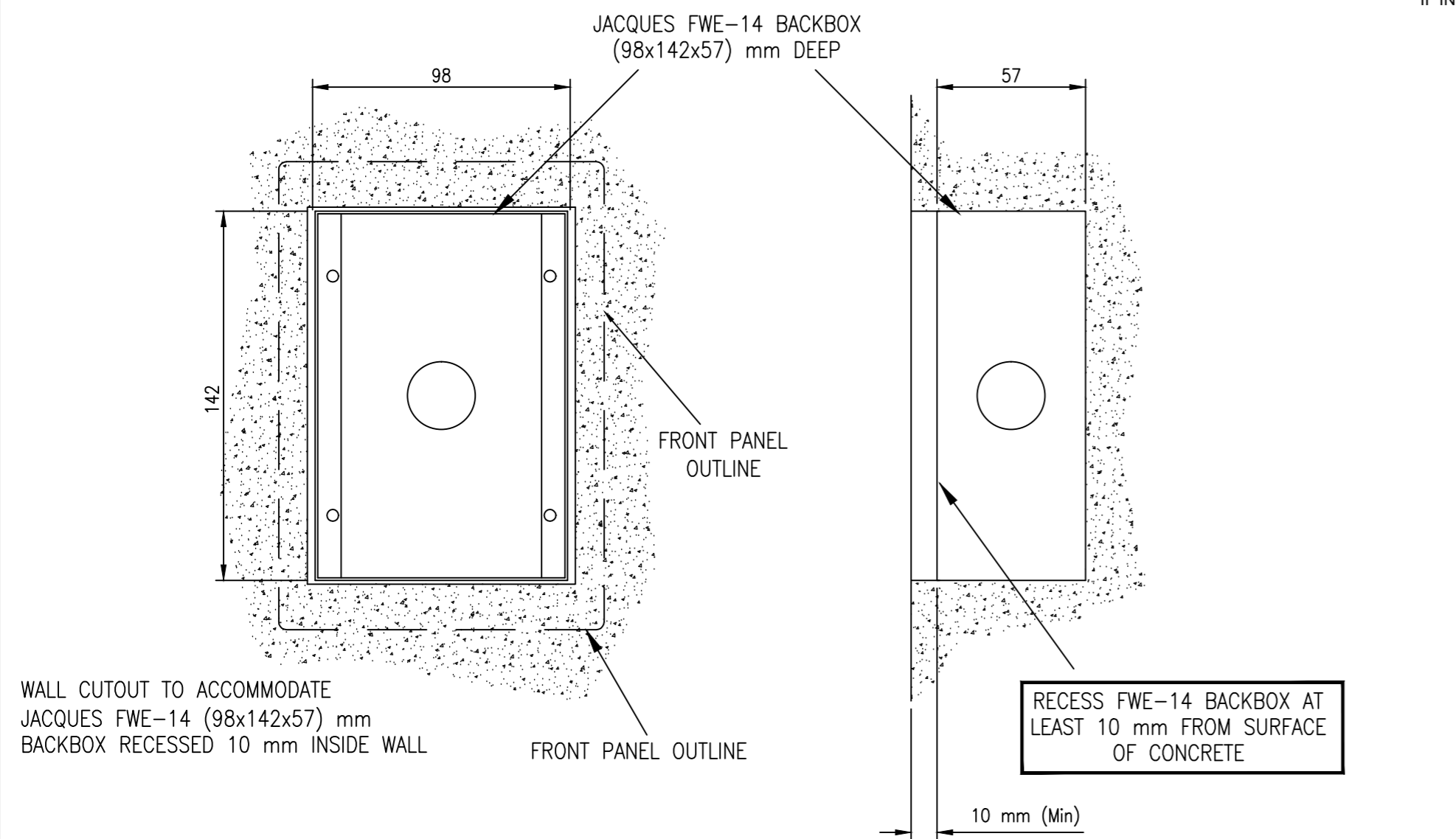
**JACQUES**  
Future Proof Communications  
www.jacques.com.au info@jacques.com.au

(C) Copyright Jacques Technologies Pty Ltd. All rights reserved.  
28-30 Bank Street, West End Q 4101  
Ph: +61 7 3846 8400  
www.jacques.com.au info@jacques.com.au

### VSL-35xQ+ JEM-2+ I/COM STATION INSTALLATION DRAWING

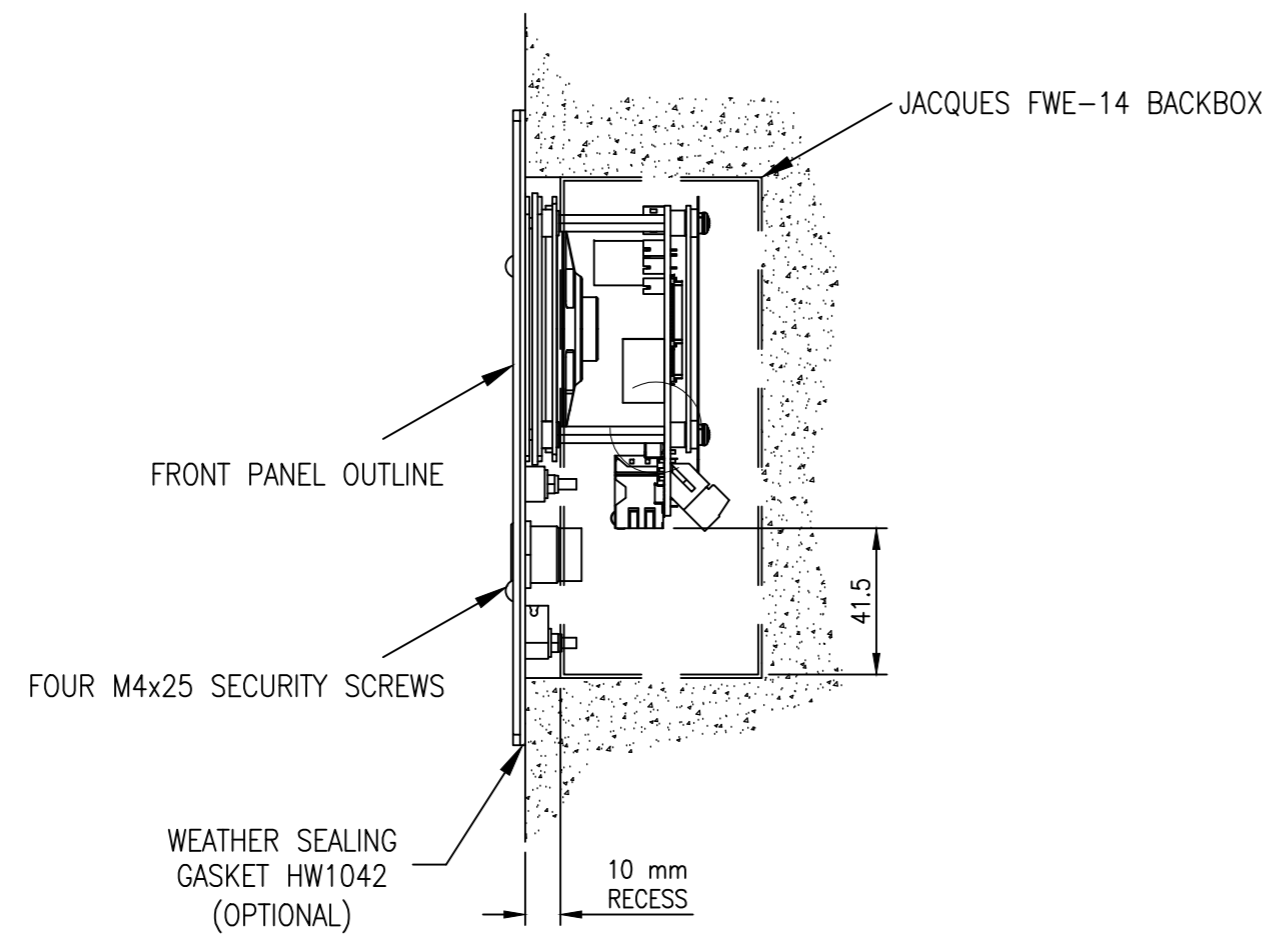
DRAWN:	DATE:	ADAPTED FROM:	FILENAME:
LFB	2013-04-08	N/A	VSL-35xQ+-INS.dwg
CHECKED:	DATE:	SCALE:	SHEET:
		N.T.S.	1 of 2
APPROVED:	DATE:	DWG NO:	REV:
		VSL-35xQ+-INS	2

DO NOT SCALE  
IF IN DOUBT - ASK!



WALL CUTOUT TO ACCOMMODATE JACQUES FWE-14 (98x142x57) mm BACKBOX RECESSED 10 mm INSIDE WALL

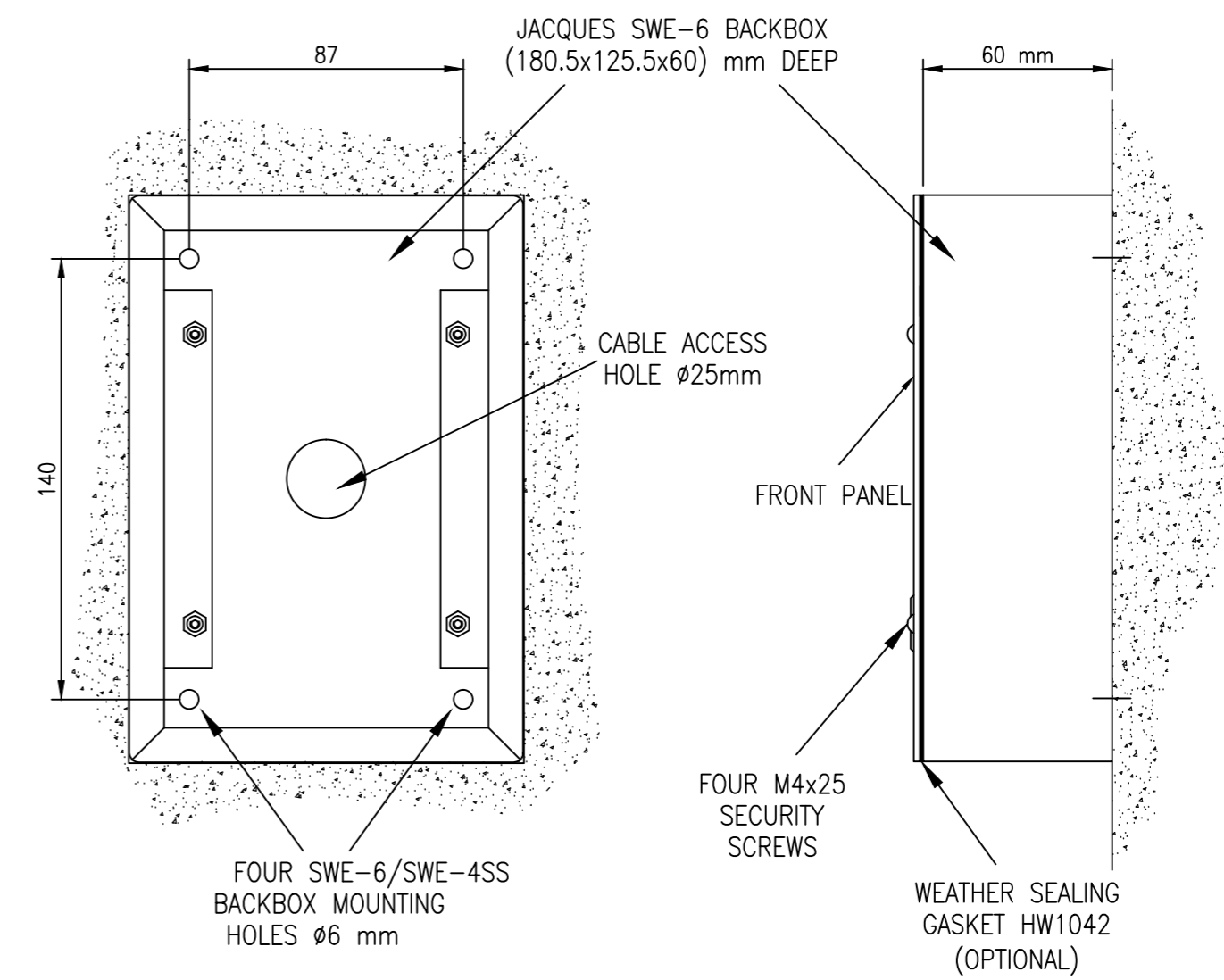
RECESS FWE-14 BACKBOX AT LEAST 10 mm FROM SURFACE OF CONCRETE



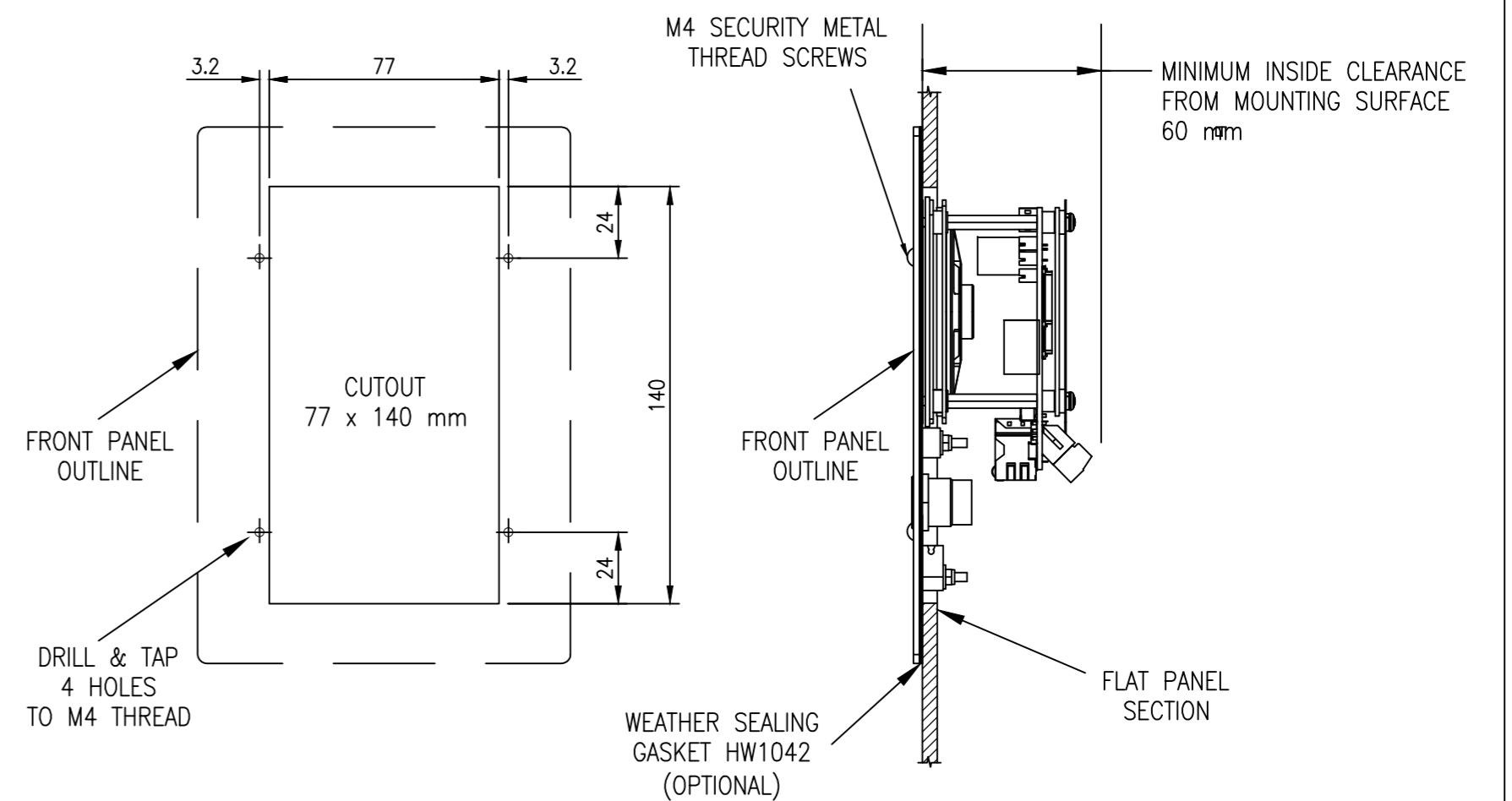
FLUSH WALL MOUNT USING FWE-14 BACKBOX

ALL DIMENSIONS IN MILLIMETRES

©2018 Jacques Technologies PTY LTD



SURFACE MOUNTING USING SWE-6 OR SWE-4SS BACKBOX



FLUSH MOUNTING INTO FLAT PANEL

REV	DATE	CHANGE DESCRIPTION	BY
1	2013-06-06	GASKET PART NUMBER CORRECTED.	LFB
2	2018-08-08	NOTE ADDED REGARDING VSL-354QS+ & VSL-351QS+/P RELAY CONNECTIONS NOT BEING ACCESSIBLE. DIMENSION 63 CHANGED TO 60 mm IN SURFACE MOUNT VIEW. DWG NO. & FILENAME WAS VSL-35xQ+ INS. IT IS NOW VSL-35xQ+-INS.	LFB

		<small>(C) Copyright Jacques Technologies Pty Ltd. All rights reserved. 28-30 Bank Street, West End Q 4101 Ph: +61 7 3846 8400 www.jacques.com.au info@jacques.com.au</small>	
<p><b>VSL-35xQ+ JEM-2+ I/COM STATION GENERAL ASSEMBLY</b></p>			
DRAWN:	DATE:	ADAPTED FROM:	FILENAME:
LFB	2013-04-08	N/A	VSL-35xQ+-INS.dwg
CHECKED:	DATE:	SCALE:	SHEET:
		N.T.S.	2 of 2
APPROVED:	DATE:	DWG NO:	REV:
		VSL-35xQ+-INS	2