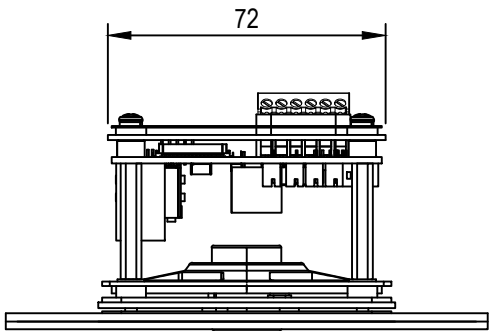
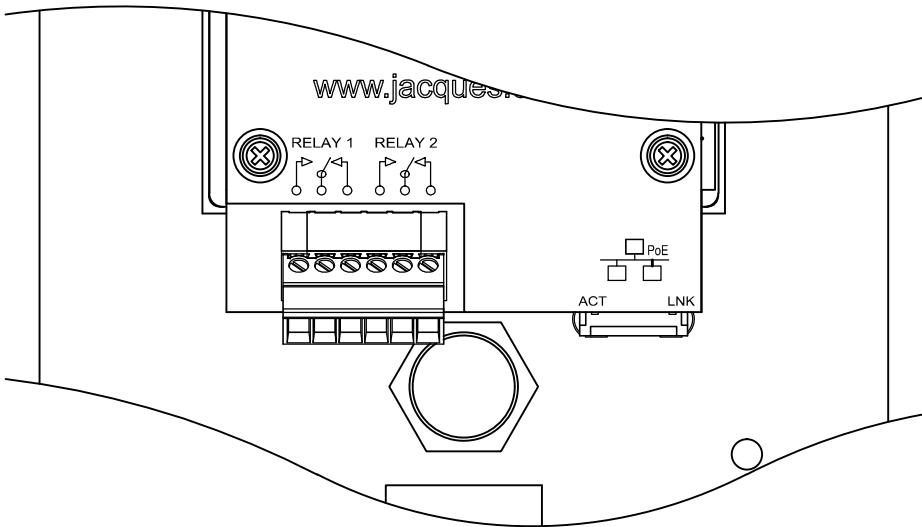
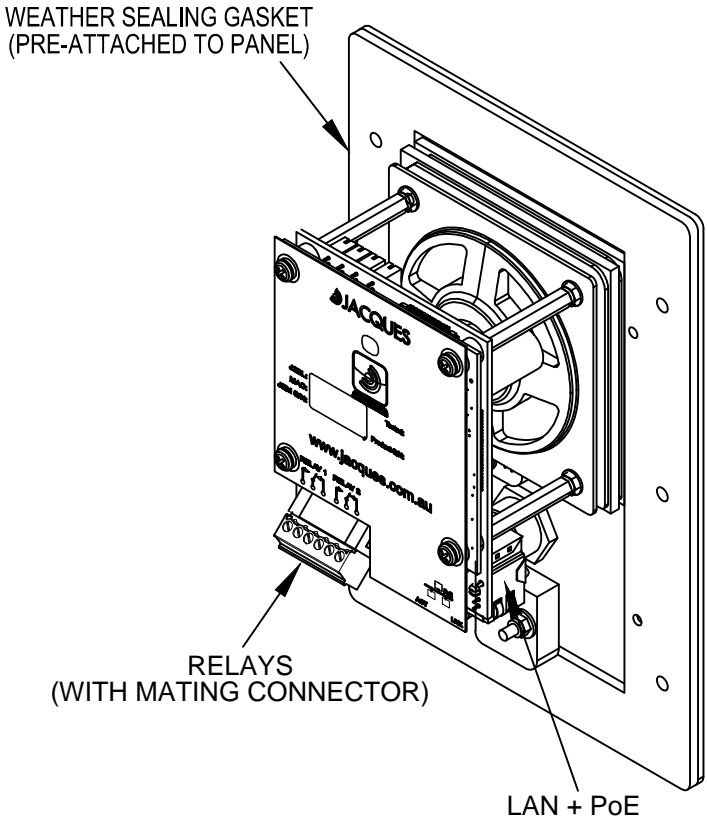
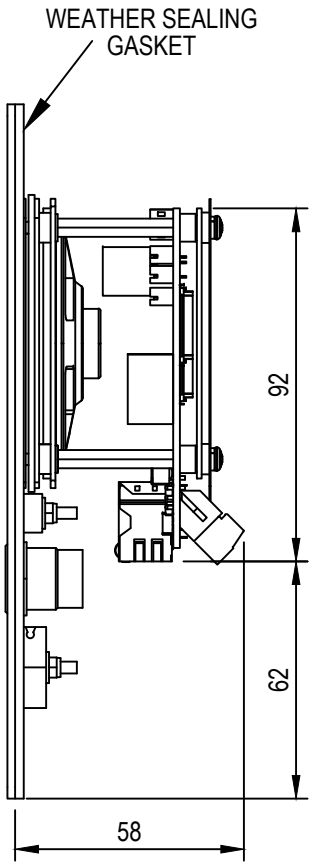
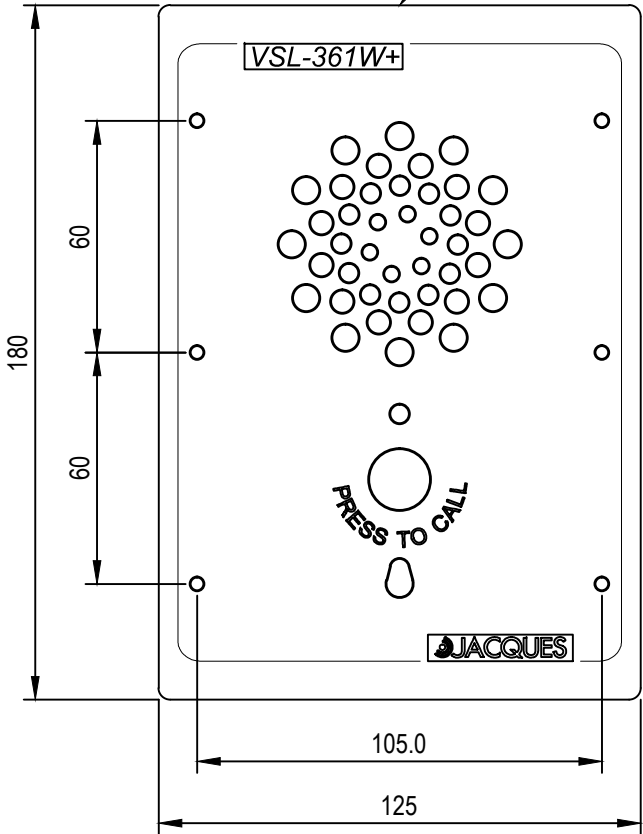


DO NOT SCALE
IF IN DOUBT - ASK!

VSL-36xW+ INTERCOM STATION INSTALLATION DETAILS



VSL-361W+
SHOWN AS EXAMPLE

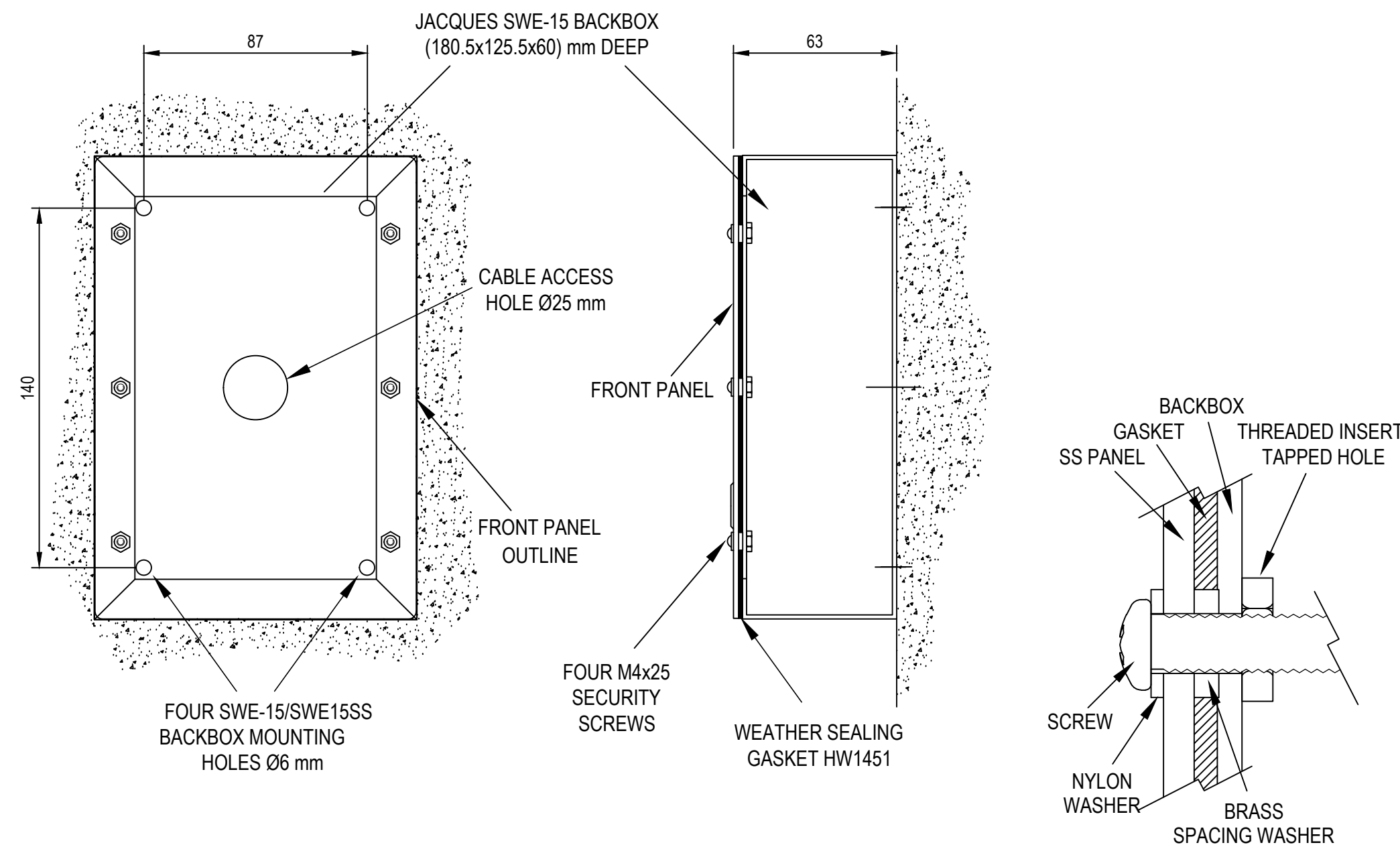


ENLARGED VIEW
SHOWING CONNECTIONS

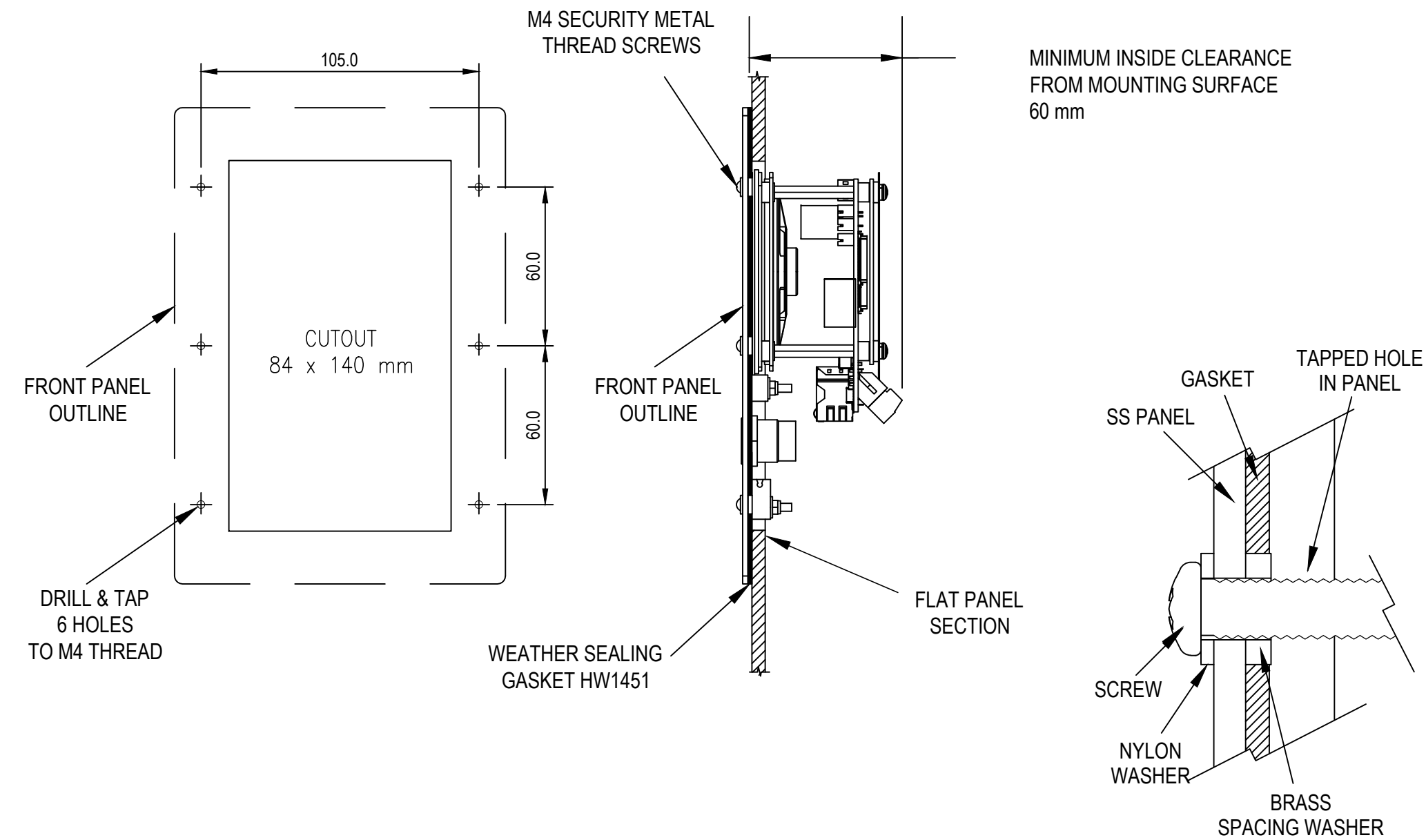
- Notes:
- 1. This drawing is for the VSL-36x+ family of JEM-2+ Intercoms.
 - 2. Power Input: via IEEE 802.3af PoE (Class 2)
 - 3. Relay contacts rating: 30 V d.c. / 2 A
 - 4. Fit the intercom in place using M4x25 security screws & M4 nylon washers (supplied by Jacques, HW451, qty 6).
 - 5. Check gasket for presence of all 6 spacing washers sandwiched between panel and gasket at all fixing holes. These must be used. Without them, panel bowing will occur and may result in poor sealing.

REV	DATE	CHANGE DESCRIPTION	BY	<div><div><div><div>JACQUES</div><div>Future Proof Communications</div></div><div><div><div><div>(C) Copyright Jacques Technologies Pty Ltd. All rights reserved. 28-30 Bank Street, West End Q 4101 Ph: +61 7 3846 8400 www.jacques.com.au</div><div>info@jacques.com.au</div></div></div></div></div></div>
0	2015-09-18	FIRST RELEASE	LFB	<div>VSL-36xW+ INTERCOM STATION INSTALLATION DETAILS</div> <div><div><div>DRAWN: LFB</div><div>DATE: 2015-09-18</div></div><div><div>ADAPTED FROM: N/A</div><div>SCALE: N.T.S.</div></div><div><div>FILENAME: VSL-36xW1-INS.dwg</div><div>SHEET: 1 of 2</div></div><div><div>SIZE: A3</div><div>REV: 1</div></div></div>
1	2018-06-18	MOUNTING HOLE DIMENSIONS ADDED TO FLUSH FLAT PANEL VIEW SHT 2 (#1281). NOTES 4 AND 5 AMENDED. VIEW SHOWING PANEL FIXINGS, SHT 2 , UPDATED. #1281	LFB	

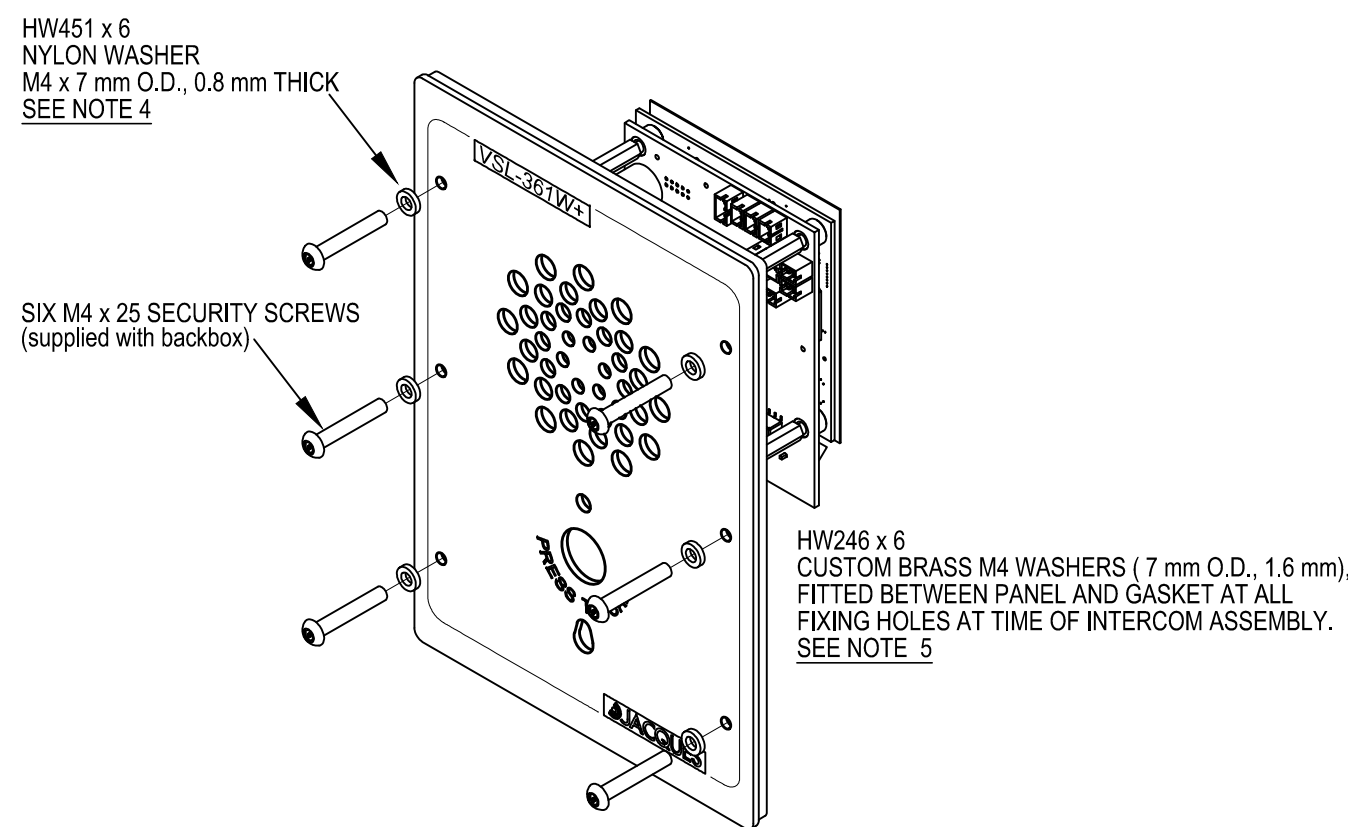
DO NOT SCALE
IF IN DOUBT - ASK!



SURFACE MOUNTING USING SWE-15 OR SWE-15SS BACKBOX



FLUSH MOUNTING INTO FLAT PANEL



VIEW SHOWING PANEL FIXINGS

REV	DATE	CHANGE DESCRIPTION	BY
0	2015-09-18	FIRST RELEASE	LFB
1	2018-06-18	MOUNTING HOLE DIMENSIONS ADDED TO FLUSH FLAT PANEL VIEW (#1271). NOTES 4 AND 5 AMENDED (SHT 1). VIEW SHOWING PANEL FIXINGS UPDATED. #1281	LFB LFB

JACQUES Future Proof Communications		(C) Copyright Jacques Technologies Pty Ltd. All rights reserved. 28-30 Bank Street, West End Q 4101 Ph: +61 7 3846 8400 www.jacques.com.au info@jacques.com.au	
VSL-36xW+ INTERCOM STATION INSTALLATION DETAILS			
DRAWN:	DATE:	ADAPTED FROM:	FILENAME:
LFB	2015-09-18	N/A	VSL-36xW1-INS.dwg
CHECKED:	DATE:	SCALE:	SHEET:
		N.T.S.	2 of 2
APPROVED:	DATE:	DWG NO:	REV:
		VSL-36xW1-INS	1