



**VIVI INTEGRATION USER GUIDE**

JED-0511

[www | jacques.com.au](http://www.jacques.com.au)

## Disclaimer Notice

Every effort has been made to ensure that the information in this document is correct at the time of publication.

Jacques Technologies Pty Ltd shall not be liable for any errors contained in this document, nor for any incidental or consequential damages that may occur in direct connection with the provision of this material.

This document does not constitute a product warranty, express or implied (including but not limited to, the implied warranty of fitness for a particular purpose), or service guarantee.

Jacques Technologies Pty Ltd does not warrant or make any representations regarding the use, or the results of the use, of the information provided within the publication in terms of its correctness, accuracy, reliability, or otherwise. No oral or written information or advice given by Jacques Technologies Pty Ltd (or by its agents, contractors, distributors, or employees) shall create a warranty or in any way increase the scope of this warranty. Some jurisdictions do not allow the exclusion of implied warranties, so the above exclusion may not apply to you.

Jacques Technologies Pty Ltd acknowledges that information in this publication may be unsuitable in various circumstances and disclaims liability for the use of the information in those circumstances.

## Copyright Notice

Copyright © 2022 Jacques Technologies Pty Ltd. All rights reserved.

The material in every part of this document, and in its entirety, is protected by copyright.

No part of this document may be used, transmitted, reproduced, translated into another format, or adapted by any means or form, in whole or in part, or for any purpose without express, written, permission from Jacques Technologies Pty Ltd.

No exceptions to these conditions will be made, except as permitted according to Australian and International copyright law. Jacques Technologies Pty Ltd reserves the right to continually improve products and update the relevant equipment specifications and documentation without notifying clients.

## Trademarks

Windows is a registered trademark of Microsoft Corporation. Pentium is a registered trademark of Intel Corporation. Other products mentioned in this document may be trademarks of their respective companies and are hereby acknowledged.

## Document Feedback

We value your feedback. To give feedback on this document please email [feedback@jacques.com.au](mailto:feedback@jacques.com.au)

## Publication Information

Document Number:	JED-0511
Revision:	1.0
Release Date:	28/04/2022

## CONTENTS

1	Introduction .....	4
2	Requirements.....	4
3	Setup.....	4
3.1	Internet Connection .....	4
4	Configuration.....	4
4.1	Connect API .....	4
4.1.1	API Errors.....	5
4.2	Add Vivi Configuration.....	6
4.3	Edit Vivi Configuration.....	6
4.4	Delete Vivi Configuration.....	7
4.5	TEST VIVI CONFIGURAITON .....	7
4.6	Vivi API Limitations .....	7
5	Event Controller .....	8
	Contact Details.....	9

## FIGURES

Figure 1: Vivi API Key .....	5
Figure 2: Invalid API Key.....	5
Figure 3: Internet Connection Lost.....	5
Figure 4: Add Vivi Configuration .....	6
Figure 5: Edit Vivi Configuration .....	7
Figure 6: Delete Vivi Configuration .....	7

## 1 INTRODUCTION

Jacques integration with Vivi allows for event triggers such as Emergency Push Buttons (physical or GUI-based) to display Vivi emergency screens along with configured audio (tones/ messages).

Vivi offers wireless screen mirroring and digital signage devices designed for education.

With this integration Jacques public address system can trigger Vivi emergency message screens to populate on devices when an emergency push button is pressed. Visual display and audio messaging work together in emergency situations.

## 2 REQUIREMENTS

The following are required for Vivi Integration

- Version 8 Web Configuration v8.00.26 or greater
- Event Controller software v8.05.25 or greater
- Vivi Web Configuration integration package v8.00 or greater
- Jacques server connect to internet via gateway
- Appropriate Vivi products (refer to [vivi.io](http://vivi.io))

---

*For uploading packages, refer to JED-0505 V8 JELinux Web Interface User Guide section 6.3 – Packages*

---

## 3 SETUP

Ensure the above listed requirements are met and installed on the system.

Ensure Vivi is configured and operational. Within Vivi, Locations and Emergencies must be configured prior to configuring the Jacques to Vivi integration.

This document shall focus on the Jacques-side configuration of the Jacques to Vivi integration.

### 3.1 INTERNET CONNECTION

To connect a Jacques server to the internet, it must be done via a gateway with internet access. The gateway for the system is set in the Host and Network page of the web configuration.

---

*For more important on how to configure the network, refer to JED-0505 V8 JELinux Web Interface User Guide section 6.2 – Host & Network*

---

## 4 CONFIGURATION

The following outlines the steps required to configure the Jacques to Vivi integration.

### 4.1 CONNECT API

To connect Vivi to Jacques, a Vivi API key is required. This key is provided by Vivi.

## Add API key to Webcfg

1. Navigate to webcfg/applications/integration/vivi integration
2. Alongside the API Key box click **Edit**
3. **Enter** the Vivi API Key in the space provided. The application will check if the API key is valid. System requires connection to the internet to check validity of API key
4. Click **Save**

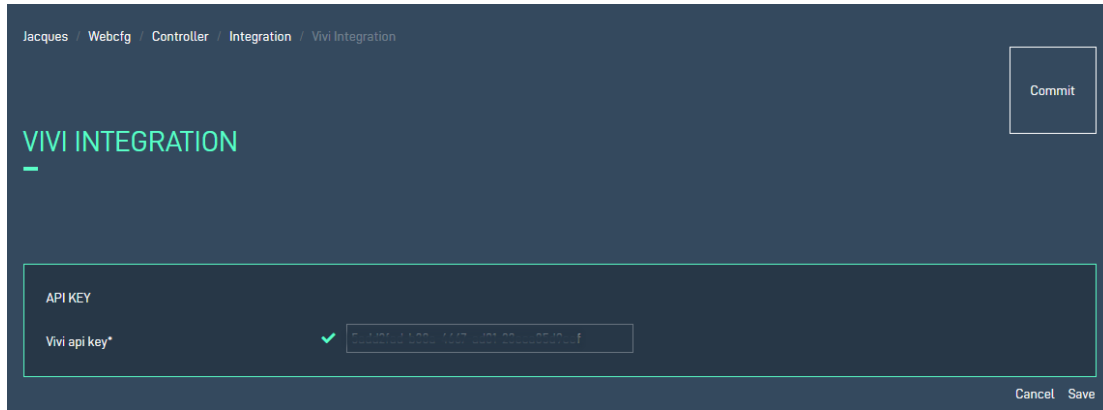


Figure 1: Vivi API Key

### 4.1.1 API Errors

If during the API validation process, there are issues, a pop up will present.

#### Invalid API Key

An invalid API key error message results when the API key is not correct. Confirmation of correct API key from Vivi would be required.

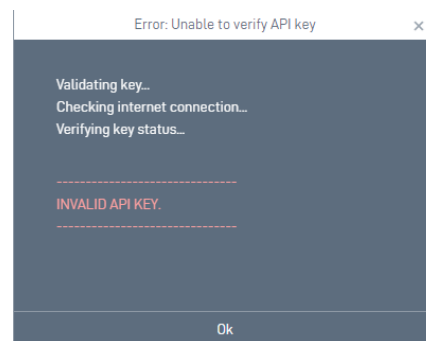


Figure 2: Invalid API Key

#### Internet Connection Issue

If connection to the internet is lost, the API cannot be validated. A network error message will present. To resolve, check & confirm internet connection.

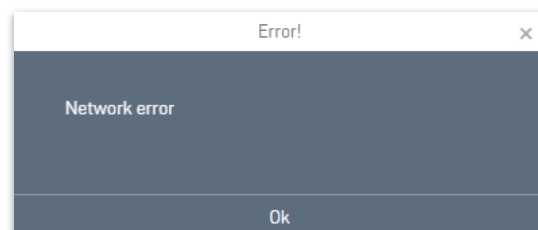


Figure 3: Internet Connection Lost

## 4.2 ADD VIVI CONFIGURATION

The Jacques system needs to understand the Emergency Type ID's and Location ID's from the Vivi system. This information is found within Vivi when configured and relates to the image displayed on the screens and the screen locations, when an emergency is triggered.

Configuration is required to link the Emergency Type ID and Location ID to be used within the Jacques system and make these known to Event Controller software.

### Add Vivi Configuration

1. Navigate to webcfg/applications/integration/vivi integration
2. Alongside the Configuration box click **Add**
3. Enter a **Name** for the configuration so that it is easily identifiable. The name will form part of the automatically created event **short code** which will be required by Event Controller software. Name should not contain spaces and be a maximum of 20 characters long
4. Enter the **Emergency Type ID** (from Vivi). Emergency Type Id is a required field. This is the ID for the screen graphic to be used when an emergency is triggered/active
5. Enter Location ID (from Vivi). Location ID is optional. This is the ID for the location of the screen(s) on location. If left blank, all Vivi screens shall display the Emergency Type ID image

Name	Emergency type ID	Location ID	Short code
Exit	487953c5-4fc4-4411-bf73-3158137f57a9		VIVI-Exit
Fire	57a179af-cd87-4127-8e90-d9209fc46b3d	7d3f8c80-2bc4-4bbe-89e6-a7b3440c2118	VIVI-Fire
Evac	ab676400-193e-41c7-a22b-fbb2a5e545b9		VIVI-Evac
Lock	3f2fa6f9-6718-434e-96c3-00dae686c3a4		VIVI-Lock

**ADD VIVI CONFIGURATION**

Name\*

Shortcode

Emergency type id\*

Location id

Cancel Save

Figure 4: Add Vivi Configuration

## 4.3 EDIT VIVI CONFIGURATION

To edit an existing Vivi Configuration

1. Select the row and click **Edit**
2. The editable fields (Emergency Type ID & Location ID) can be changed or updated. Shortcode (generated from Name) can not be edited. This is to assist with limiting changes made to the Event Controller software custom configuration file
3. When changes have been made, click **Update**

Name	Emergency type ID	Location ID	Short code
Exit	487953c5-4fc4-4411-bf73-3158137f57a9		VIVI-Exit
Fire	57a179af-cd87-4127-8a90-d9209fc46b3d	7d3f8c80-2bc4-4bbe-89e6-a7b3440c2118	VIVI-Fire
Evac	ab676400-193e-41c7-a22b-fbb2a5e545b9		VIVI-Evac
Lock	3f2fa6f9-6718-434e-96c3-00dae686c3a4		VIVI-Lock

EDIT VIVI CONFIGURATION	
Shortcode	VIVI-Fire
Emergency type id*	<input type="text" value="57a179af-cd87-4127-8a90-d9209fc46b3d"/>
Location id	<input type="text" value="7d3f8c80-2bc4-4bbe-89e6-a7b3440c2118"/>

Cancel Update

Figure 5: Edit Vivi Configuration

#### 4.4 DELETE VIVI CONFIGURATION

To edit an existing Vivi Configuration

1. Select the row and click **Delete**
2. **Confirm** delete action as the delete function cannot be undone

Name	Emergency type ID	Location ID	Short code
Exit	487953c5-4fc4-4411-bf73-3158137f57a9		VIVI-Exit
Fire	57a179af-cd87-4127-8a90-d9209fc46b3d	7d3f8c80-2bc4-4bbe-89e6-a7b3440c2118	VIVI-Fire
Evac	ab676400-193e-41c7-a22b-fbb2a5e545b9		VIVI-Evac
Lock	3f2fa6f9-6718-434e-96c3-00dae686c3a4		VIVI-Lock

Test Delete Edit Add

Figure 6: Delete Vivi Configuration

#### 4.5 TEST VIVI CONFIGURAITON

Once Vivi configuration has been added to Webcfg, it can be tested. Testing will trigger the Vivi screen/s to show the Emergency Type image.

To test the Vivi configuration

- Select the row to test and click **Test**
- **Confirm** the test action in the pop up
- Confirm the Vivi screen changes to the emergency image as expected
- To end the test click **Cancel Emergency**. This will clear the emergency from the screen.

#### 4.6 VIVI API LIMITATIONS

The following limitations exist because the information is not available in the Vivi API.

- Jacques integration cannot determine the difference between Emergency type ID and Location ID. According to API, if any id is misplaced (ie the Emergency Type ID & Location ID are entered in the incorrect space in the configuration table), it will raise an error as an invalid emergency type ID or location ID.

- Jacques integration cannot overwrite an existing emergency on a screen with a new emergency. If a second trigger is activated to initiate an Emergency Type on the same Vivi device, it will display the message as “room\_group\_id: [has an active emergency already]”. To trigger a second emergency message, the first must be deactivated.
- The API does not include status information. Therefore, Jacques integration is unable to determine what emergency is already playing on a Vivi screen.

## 5 EVENT CONTROLLER

Event Controller software requires a custom ini file to facilitate the site output of the Vivi to Jacques integration. The custom file links the trigger events (physical or soft button push, or Qbuttons) with the Vivi integration shortcode which contains the information about the Emergency Type ID & Location ID.

---

*Jacques Support can assist with a custom Event Controller file. Files are site dependant and relate to functionality required. You will be asked to provide a site backup &/or outline event triggers (ie. what button press event shall relate to what Vivi shortcode). It is recommended that Vivi Configuration (as per above) is complete prior to contacting support.*

---

Example of Vivi integration Event Controller ini file. In this example the Fire button is pressed on the Push Button Panel (button 1). When pressed audio file with tag number **7014** is played to zone **401** and **Vivi-Fire** shortcode is activated to display at the configured locations.

```
#####
# on press of button 1 - Play 7014
#####
[input-vivi_adam_FireCheck_7014]
driver=vivi_adam
pin=0
active-low=true
startup-trigger=true
[announcement-trigger-vivi_adam_FireCheck_7014]
condition=vivi_adam_FireCheck_7014
destination=401
announcement=7014
cancel-on-negate=true
queue-announcement=false
count=1
[tag-call-event-trigger-CallEvent_7014_connect]
tag=401
announcement=7014
on-connect-answer=y
[tag-call-event-trigger-CallEvent_7014_end]
tag=401
announcement=7014
on-disconnect-holdee=y
on-disconnect-holder=y
on-terminate=y
[runcommand-trigger-VIVI_7014_connect]
command=/usr/sbin/vivi.sh
condition=CallEvent_7014_connect
assert-value=trigger VIVI-Fire
[runcommand-trigger-VIVI_7014_end]
command=/usr/sbin/vivi.sh
condition=CallEvent_7014_end
assert-value=cancel VIVI-Fire
#####
```



## CONTACT DETAILS

**Ph:** +61 7 3846 8400  
**Email:** [info@jacques.com.au](mailto:info@jacques.com.au)  
**Website:** [www.jacques.com.au](http://www.jacques.com.au)

**ABN:** 48 074 448 712

### DOCUMENT REVISION HISTORY

REVISION	DATE	AUTHOR	CHANGE DESCRIPTION
1.0	2022-04-28	RR/AM	Initial Release